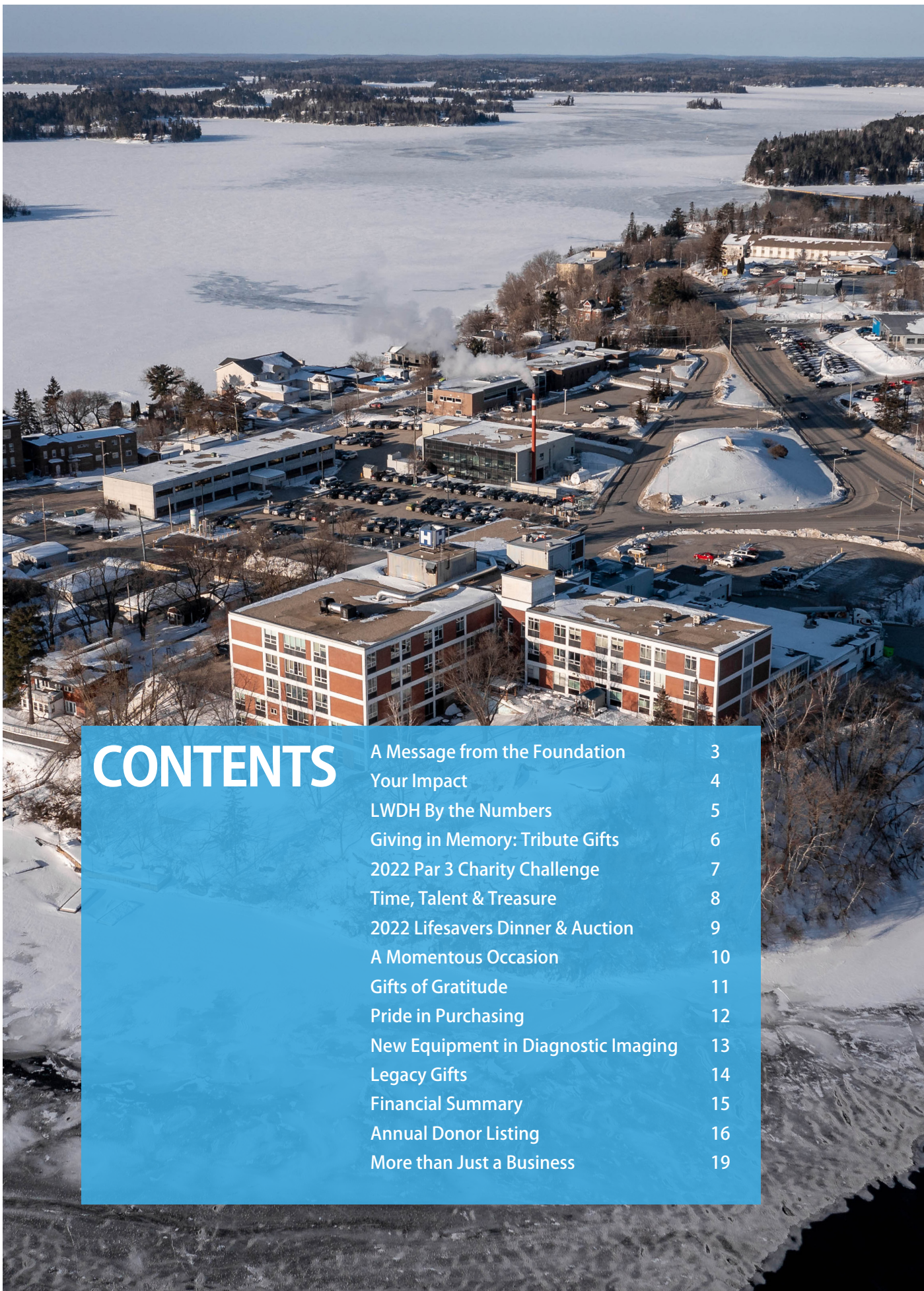


# Annual Impact Report

2022-2023



Donors are a pillar of our community.  
We couldn't do what we do without you.  
Take a look at what you made possible this year!



# CONTENTS

|                                     |    |
|-------------------------------------|----|
| A Message from the Foundation       | 3  |
| Your Impact                         | 4  |
| LWDH By the Numbers                 | 5  |
| Giving in Memory: Tribute Gifts     | 6  |
| 2022 Par 3 Charity Challenge        | 7  |
| Time, Talent & Treasure             | 8  |
| 2022 Lifesavers Dinner & Auction    | 9  |
| A Momentous Occasion                | 10 |
| Gifts of Gratitude                  | 11 |
| Pride in Purchasing                 | 12 |
| New Equipment in Diagnostic Imaging | 13 |
| Legacy Gifts                        | 14 |
| Financial Summary                   | 15 |
| Annual Donor Listing                | 16 |
| More than Just a Business           | 19 |

# THANK YOU.

## A Message from the Foundation

---

In a year that continued to present unique challenges and highlight the significant human resources pressure of Canada's healthcare system, the unstoppable generosity of our community was a constant source of inspiration, energy – and impact! Throughout the year, our community came together with even greater focus and determination to engage in conversations about how to keep world class care close to home.

The resurgence of annual events like the Par 3 Charity Challenge, the Lifesavers Dinner and Auction, the monthly 50/50 and a matching gift component to the Tree of Life Campaign, helped to raise vital funds needed to purchase new capital medical equipment for our hospital. Thanks to the generosity of this community, the Lake of the Woods District Hospital Foundation (LWDHF) was able to transfer an outstanding \$1,063,363 to LWDH to equip our hospital with state-of-the-art equipment and ensure that our health care professionals have the right equipment, tools and resources to provide excellent care to our family, friends and neighbours.

A tremendous highlight was Grand Opening of the new Fluoroscopy Suite and Echo cardiography/Biopsy Room in the Diagnostic Imaging department. Nearly \$700,000 of these upgrades were funded by your gifts including; portions of the Fluoroscopy Suite Project, an Echo Ultrasound machine, a Mobile X-ray machine, a Barco Monitor and a Bone Mineral Density Machine. This is a powerful testament to how passionately our community believes in the work and mission of LWDHF.

This moment in time, including the inherent challenges, is an incredible opportunity for healthcare philanthropy. As our hospital seeks

to innovate health care delivery in a nearly 100-year old building and address the unique needs of our communities, the role of the Foundation is more critical than ever. Our donors have helped keep exceptional care close to home and improve health outcomes for patients across the Northwest. The generosity, conviction and passion from our community is evident; from nearly 80 Monthly Donors, to the increasing number of staff members who have said "I'm in" to the Employee Giving Program, our steadfast annual donors and the welcomed addition of 200 new donors – all providing invaluable funds for our Hospital and Foundation's most urgent needs.

Your generosity has had such a profound and enduring impact on our hospital and indeed our greater community. Together, we are creating real, tangible change, for our communities and health systems, as a whole.

With Gratitude,



**Kimberly Mejia**  
Chair, Board of Directors



**Mira Trebilcock**  
Executive Director

# YOUR IMPACT



**1,153**  
DONORS

**3,149**  
DONATIONS  
RECEIVED

**299**  
IN MEMORIAM GIFTS  
TOTAL GIVEN  
**\$66,108**

**330** VOLUNTEER HOURS

**31%**  
STAFF  
PARTICIPATION

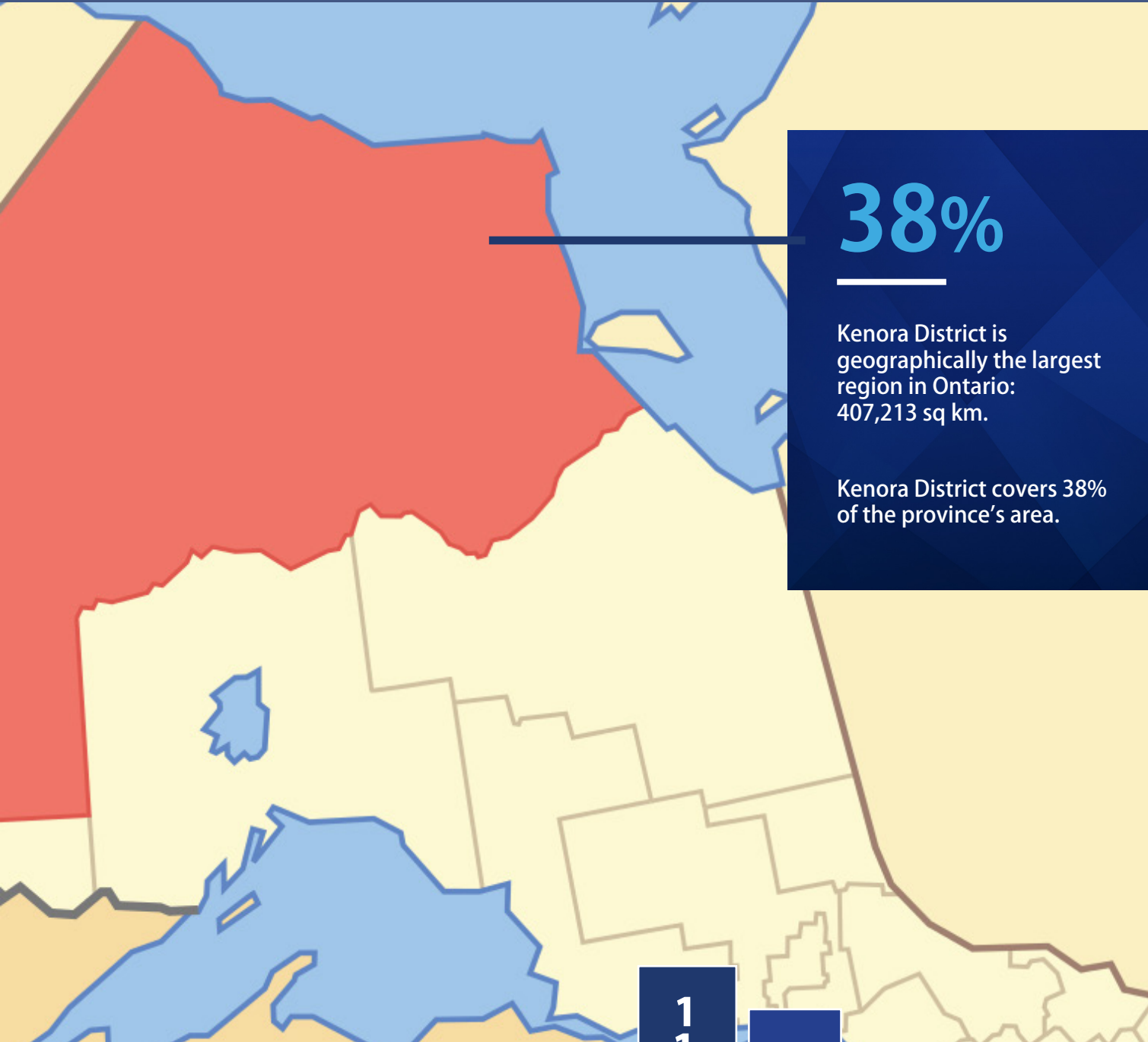
PAR 3 CHARITY  
CHALLENGE  
RAISED  
**\$160,000**

16<sup>TH</sup> LIFESAVERS  
DINNER & AUCTION  
NET REVENUE  
**\$351,000**



**\$1,063,363**

TRANSFERRED  
TO LWDH



**38%**

Kenora District is geographically the largest region in Ontario: 407,213 sq km.

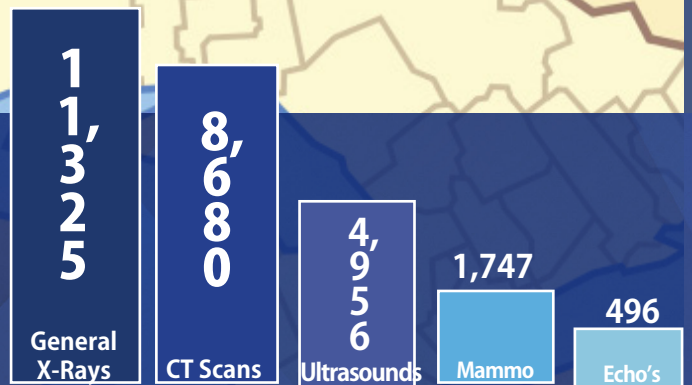
Kenora District covers 38% of the province's area.

## LWDH Figures Tell an Important Story

**17,526** Total number of Emergency Department (ED) visits



An average of **30-50** people per day. During the summer months, this range increases to **50-80** people per day.



**27,204** Diagnostic Imagings Performed



**2,082** Surgeries & Surgical procedures

**144**



# Giving in Memory

## A Lasting Expression of Community

Giving in memory is a way to celebrate and honour the life of special people whose lives have touched yours. Marilyn Johnson knew that this type of tribute donation offered a thoughtful way for friends and family to celebrate Doug and his dedication to philanthropy and community while enhancing patient care, close to home.

Born in Kenora, Doug had the opportunity to enjoy the summers growing up on Coney Island and spent winters on the ski hill. A Canadian patriot, Doug joined the Cameron Highlanders in Winnipeg and wore the regimental colours proudly. After a decade away, travelling across Western Canada, Doug happily returned to Kenora in 1974 to establish, with his partner Len Cleland, the butcher shop known as Consumers' Frosted Foods. A local staple, Consumers' Frosted Foods proudly operated for almost 50 years.

Beyond being a well-known local businessman, Doug was an aficionado of the history of Kenora and was always delighted to tell new residents about Kenora families over the years. Doug was able to apply his knowledge of Kenora and passion for community through countless acts of service. Through the 1990's Doug served as a devoted member of the Kenora Golf and Country Club Board and served as the president. Doug was also a member of the Jaycees in his early years, later served as a Kinsman and was active in the Rotary Club of Kenora until 2019. He cared deeply for his community and also spent time serving as the president of Chamber of Commerce.

Big in stature with a deep voice and a booming laugh, Doug was a presence wherever he went. He was a voracious reader, and he possessed a good mind, a strong memory and paid such attention to detail that he could contend favourably in his ever-entertaining debates with his brother Ian. Doug touched many lives in the community, but his heart and biggest joy was always his wife Marilyn, family and extended family.

Our hospital is a valuable asset for this community. Following Doug's passing, Marilyn wanted to recognize those health care providers who supported Doug through the years and especially the staff at LWDH who participated in his care during the later days. In choosing to direct donations in Doug's memory to the Lake of the Woods District Hospital Foundation, the Johnson family is creating a lasting legacy of care for our community.

To learn more about how you can help to build a healthy future that families will benefit from for generations to come, please contact the Foundation at [lwdhf@lwdh.on.ca](mailto:lwdhf@lwdh.on.ca).



**Doug Johnson**

*Leaves a philanthropic legacy of care for the community, through tribute gifts and 28 consecutive years of hisotrical giving to the hospital Foundation.*

# 2022 Par 3 Charity Challenge

## Driven by the Dingwall Group

After a short hiatus, the Foundation's annual golf tournament made a successful return to the Kenora Golf & Country Club in 2022, thanks to the leadership and vision of Bill Dingwall and the Dingwall Group of Companies.

Thanks to the tremendous support of 152 golfers, 50 sponsors and 80 volunteers, the tournament raised an outstanding \$162,787 to support the purchase of a new Mobile Digital X-ray machine for the Diagnostic Imaging Department at the Lake of the Woods District Hospital (LWDH).

There was much to celebrate at the Lake of the Woods District Hospital Foundation (LWDHF) 2<sup>nd</sup> Annual Par 3 Charity Challenge. The philanthropic spirit of the 4 Presenting Sponsors; The Standard Insurance, Kenora Chiefs Advisory, Jarnel Contracting and Sierra Construction, and 15 Platinum Sponsors, set the tone for the day and demonstrated the ripple effect our collective efforts can have on enhancing patient care, close to home.

There were many fun times shared, relationships formed and unforgettable memories made. The all-inclusive golfing experience featured a networking lunch, 18 chances to win hole-in-one prizes valued up to \$1 million, interactive holes organized by local businesses, putting contests and more! The event was capped off with an incredible meal and awarding the 18 closest to the pin prizes!

This signature community event is a cornerstone to funding the essential capital medical equipment at our hospital. Life is unpredictable. Whether young or old, we cannot predict what health concerns we and our loved ones will face. To ensure that the best healthcare and state-of-the-art medical equipment remain available at the LWDH, we rely on these events to support the wellbeing of our community.

Of course an event like this does not happen, without the passion and commitment from a dedicated group of organizers. Thank you to everyone who had a hand in this achievement!

**\$162,787 #FOREYOURHOSPITAL**



# LWDH Staff Say “I’m In”



*“At the end of the day, we are – or will all be - affected by this hospital at some point, whether we work here, have family here, or vacation here. The hospital impacts all of our lives and I feel it important to donate to something that’s only going to benefit all of us in the end.”*

Assunta Dewson  
Senior Health Records Technician, LWDH

In the Fall of 2022, LWDH staff were asked the same question as donors, ‘Do you want exceptional healthcare, close to home?’ For many, the response was ‘Yes, I’m in’ as departments rallied their peers to sign up for our annual Employee Giving Campaign. As someone who works at LWDH, you see the difference made by having up-to-date medical equipment to treat patients.

Over 189 staff pledged their support by donating to the Foundation, at least once throughout the year, with 126 of those individuals choose to donate on a monthly basis through payroll deductions. This figure represents a 31% uptake across our LWDH staff base which highlights the incredible dedication of our healthcare teams. Thank you for giving your colleagues the tools they need to care for our whole community!

Beyond financial resources, LWDH staff eagerly share their time and talents to support various Foundation initiatives at the hospital and throughout the community. Thank you for investing in the long-term health of our organization!

## Thank You Volunteers

At the Lake of the Woods District Hospital Foundation, our volunteer positions are meaningful and gratifying. Volunteers are invaluable at assisting us with special events such as our Annual Golf Tournament and our extraordinary Lifesavers Dinner and Auction, or supporting us with administrative work and short term projects. In 2022, community members of varying ages, skill sets and ability came together to help us deliver our goals, giving up their time as a means to ‘make a difference’.







# A Nautical Night at RLWYC

What started as a dinner at Smith Camps has evolved into the single largest annual fundraiser for the LWDH Foundation. The Lifesavers Dinner and Auction has raised over \$3 million for capital infrastructure and medical equipment at the Lake of the Woods District Hospital (LWDH) throughout its 16-year history.

The return of the evening in 2022 celebrated the remarkable spirit and strength of Lake of the Woods community, while raising an unprecedented \$351,000 to invest in new equipment at LWDH.

It was heartwarming to see the passion and respect for our hospital and healthcare workers that filled the room last August. Throughout the sixteen Lifesaver Dinners, we never ceased to be amazed by the excitement and energy created when like-minded people come together to support enhanced patient care.

Thank you to everyone who had a hand in this achievement – and there were many – from the talented Event Planning Committee volunteers to the generous guests, auction donors, businesses, community partners, Lifeboat Table Sponsors, Anchor Donors and the 24 Lighthouse Families. Thank you for being a guiding light to transformative patient care at LWDH.



## EQUIPMENT FUNDED



**Echo Ultrasound Machine**  
*Diagnostic Imaging*



**Portable Ultrasound & Stand**  
*Maternity Unit*



# A Collaborative Vision Becomes Reality



## Prior Fluoro Unit at LWDH

In 2021, LWDH's Fluoroscopy Suite was decommissioned. The hospital also lacked a dedicated space and Echo technologist to adequately serve the volume of patients requiring Echocardiography. The loss of these services meant patients had to travel to Winnipeg and Thunder Bay, which inevitably meant longer wait times.

## Fast Facts - DI

120 Patients/day

8 Services offered

20 DI Team members

February 11, 2023 marked an important milestone for the Diagnostic Imaging Department at Lake of the Woods District Hospital (LWDH) with the Grand Opening of the new Fluoroscopy Suite and Echocardiogram/Positron Room.

Echocardiography provides visualization of how the heart is functioning and performing. Fluoroscopy is imaging equipment which allows real-time 3-D visualization of body structures. During fluoroscopy, x-ray beams are continually emitted and captured on a screen, producing a real-time, dynamic image. This allows for a dynamic assessment of anatomy and function.

The new LWDH Fluoroscopy Suite offers dual purposes: fluoroscopy and x-ray capabilities, unlike the older unit which was solely fluoroscopy. Given these capabilities, this unit will be utilized 24/7 by Diagnostic Imaging (DI). Additionally, the new machine has pediatric settings, meaning pediatric patients will be able to receive treatments in Kenora rather than having to travel to a children's hospital. It also supports swallowing studies which are of particular importance for speech

language pathology assessments, and for determining why patients are experiencing difficulties swallowing.

Ray Racette, LWDH President & CEO shares "We are extremely proud of both projects. In a very short time frame, careful planning took place on new equipment selection and purchasing, space logistics funding, approval for use by the Ministry of Health, certification and training."

The cost of these two projects equated to a nearly one-million dollar investment into our hospital. The recent DI equipment purchases were made possible through the generosity of our community. Nearly \$500,000 in proceeds from the online monthly 50/50 raffle, individual donations and proceeds from the 2022 Lifesaver Dinner & Auction helped to fund new technologies that directly enhance patient care and keep exceptional care close to home. We are extremely fortunate to have the unwavering and generous support of our community to help transform and shape LWDH as we know it today.



Many patients and families ask how they can express gratitude for the exceptional care they received during their time at LWDH. That is why we are re-establishing our grateful patient program, called **GIFTS OF GRATITUDE**.

During your visit, was there a nurse, doctor, therapist, food service worker, volunteer, or other caregiver who played, or continues to play, a meaningful role in your healthcare journey? Consider honouring them with a Gift of Gratitude.

We invite you to share your gratitude by saying 'thank you.' You can also acknowledge and celebrate the individual or team member who made a difference by donating in their honour. The cost of providing this level of care is greater than available government funding. That's why we need your help.

The donations are received by the Foundation and are used to purchase over \$1,000,000 in medical equipment, improve facilities, and introduce new programs at LWDH.

When a donation is made honouring a hospital staff member, that special staff member will receive a personalized message from you, as well as an exclusive Gift of Gratitude lanyard pin as a physical reminder of your appreciation.

All honourees, both individuals and team, will get their photo taken to be shared amongst staff and on LWDH Foundation's social media pages. You've experienced the exceptional care provided by our physicians, nurses, support staff, and other health care providers. Please help to ensure that the same is available to your family and friends when they need it.

### Lanyard Pin



### Message From You



The amount you give is always confidential, but the message you send is invaluable.

*"My husband and I live in Calgary and have had a place at the lake for over 50 years. We have had to utilize LWDH several times, along with many other hospitals across Canada. The service at LWDH is hands down, phenomenal! Each stay we have received great care and it's truly such a caring place."*

Margaret & Ed  
Grateful Patients

# Pride in Purchasing

The success of our hospital is directly related to the generosity and vision of our community. The government plays a significant role, but the majority of medical equipment, such as vital signs machines, ventilators, reverse osmosis machines, etc, are funded through donations from the community. Residents and businesses play an important role in keeping our hospital strong.



## **2x** Hematology Analyzer & BackUp Analyzer

Hematology Analyzers are highly specialized machines used to analyze blood work and specific results of blood tests can define many hematologic disorders. Thanks to Moncrief Construction Ltd. the LWDH lab was able to acquire a mainframe Analyzer and a backup analyzer, which means no downtime and timely results for patients.

## **4x** CADD Pump Adapters

The CADD Solis pumps are used for post-op IV PCA analgesia and for palliative patients as a continuous infusion into the subcutaneous tissue. The adapters required were funded through a generous gift made by the late Eric Liznick in memory of his loving wife Carol who passed away in 2021.



## **20x** We're Pumped! Novum IQ Pumps & Carriers

Thanks to the support of individuals, the Kenora Kinsmen and a gift from the Estate of William Allan Thompson, the ED, ICU, 2E and 3E received new pumps. The new Baxter Novum IQ large volume infusion pumps increase infusion safety for patients and ensure accurate administration of intravenous (IV) solutions, medications and parenteral nutrition.

## **1x** Bladder Scanner & Cart

Are used to help diagnose, evaluate and treat urinary retention. The Kenora Kinsmen have helped to equip the LWDH with a new Bladder Scanner in 2023.

## More New Equipment You Helped to Fund in 2022-23

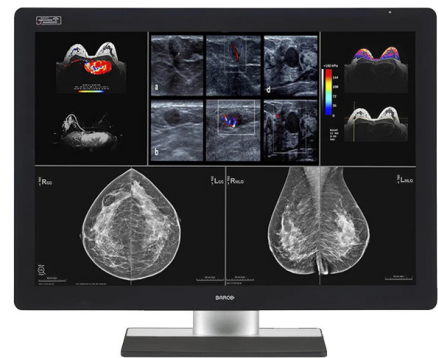
2 Exam Tables - Internal Medicine  
2 ER Transducers - Emergency Department  
Blanket Warmer - Mental Health & Addictions  
EMG Machine - Visiting Specialists  
Fetal Monitor - Maternity  
Fluency Flex Software & Installation - IS/DI

Klimer Cribs - Maternity  
LUCAS Chest Compression System - ED  
McCulloch Retractor - Surgical Services  
Portable Ultrasound & Stand - Maternity  
3 Screening Kiosks - Admitting

# Your Impact In Diagnostic Imaging

## Barco® Coronis UNITI

Purchased with proceeds from the First Annual Ladies Open Tournament, an anonymous individual donation and a \$30,000 contribution from Larry McDonald and Family, in memory of their loving wife and mother, Anchilla McDonald.



## Digital Mobile X-Ray Machine

Purchased with proceeds from 2022 Par 3 Charity Challenge, driven by the Dingwall Group. The mobile x-ray machine is a vital piece of equipment that allows medical staff to take images at the patient's bedside and better support immobile patients. The first portable digital unit was purchased in 2004 and the new machine arrived in May 2023.

## Bone Mineral Density Machine

Proudly purchased thanks to the support of Doug Lafreniere and his team at Jarnel Contracting Ltd, along with proceeds of the 50/50 raffle during the 2022 winter months.



## Helical Shuttle Software for the CT Scanner

Purchased in partnership with our community. This Canon Medical Systems software upgrade for the CT Scanner expands clinical capabilities and improves workflow through enhanced 4D Helical Shuttle Scan as well as Helical Shuttle, Brain Perfusion Image Analysis.

## Fluoroscopy Suite Project

Partially funded with the proceeds from LWDHF's 50/50 raffle and generous community support throughout the last two years. Kenora is the only site in our region, outside of Thunder Bay, to offer Fluoroscopy!

## Echo Ultrasound Machine

Purchased with proceeds from the 2022 Lifesavers Dinner & Auction. In just 8 months of operation, LWDH's Cardiac Sonographer performed 496 echo ultrasounds!

## Board of Directors 2022-2023

---

Kimberly Mejia  
BOARD CHAIR

Melanie Buffett  
VICE-CHAIR

Jackie Hailstone  
TREASURER/SECRETARY

Anthony Sharp  
PAST CHAIR

Sauna Aubin  
DIRECTOR

Marc Bissonnette  
DIRECTOR

Dr. Stephane Foidart  
DIRECTOR

Laci Dingwall  
DIRECTOR

Ashley Hendy  
DIRECTOR

Barry Marmus  
DIRECTOR

Colleen Neil  
DIRECTOR

We thank those board members who completed or ended their terms in 2022.

Brock Chisholm

Stephen Mitchell

# Leaving a Legacy

## What will your legacy be?

Many of you, our generous donors, support the Foundation through donations, pledges and gifts of stock. Your generosity lights the way for innovation and new capital equipment to keep world-class care at our small hospital, on the lake. But did you know there are a variety of benefits by giving another way?

Leaving a legacy gift in your Will to the Lake of the Woods District Hospital Foundation (LWDHF) is an ideal way to continue making a difference to the health of our community for future generations. When leaving a legacy in a Will, it is recommended that a lawyer be consulted to help with the process.

In every edition of The Pulse, the Foundation's semi-annual newsletter, we will review topics related to leaving a planned gift. In this edition, our Board Chair Kimberly P. Mejia, Partner at Hook Seller Lundin LLP, shares her expertise about the benefits of leaving a gift to a charity in a Will and how to go about it.

A charitable bequest is easy to arrange, flexible, and will support your wishes to take care of your family and make a lasting impact on your favourite charity by giving a bigger donation than you would be able to otherwise. Your lawyer will help you determine the best structure for a charitable gift in your Will, these can include:

- Specific Bequest – you designate a specific dollar amount or piece of property in your Will to a charity.
- Residual Bequest – in your Will you allocate all or a portion of your estate that remains after all debts, taxes and expenses are paid.
- Conditional Bequest – you make a provision in your Will that your gift only takes effect if your primary intention cannot be met.

The financial advantages to this type of charitable giving are a little less known. The Canadian government has created very effective tax incentives to encourage individuals to leave a gift to charity from their estates. Upon passing, a person is deemed to have disposed of each capital property they own and received proceeds of such at fair market value. This will likely trigger a capital gain, 50% of which will be subject to tax. Leaving a charitable gift in your Will is one way to help you shelter your loved ones from this exorbitant amount by reducing the tax burden on your estate while allowing your favorite charity to benefit from receiving a gift.

If you would like additional information about Planned Giving options, please contact Mira Trebilcock, Executive Director at:

807-468-9861 x2419

[mtrebilcock@lwdh.on.ca](mailto:mtrebilcock@lwdh.on.ca)

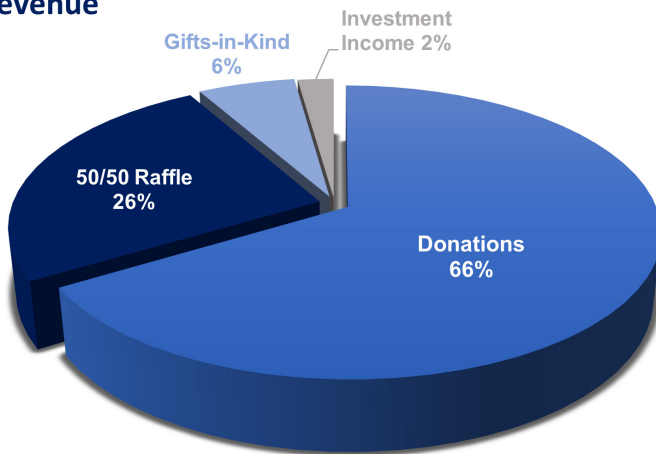
# Your Gifts Make Care Better!

Modern equipment is a key part of today's health care and your generous donations allow the hospital to acquire the advanced tools needed to improve care and save lives. Your donations significantly impacted the care that is provided at your regional hospital, and we are proud to illustrate these philanthropic gifts.



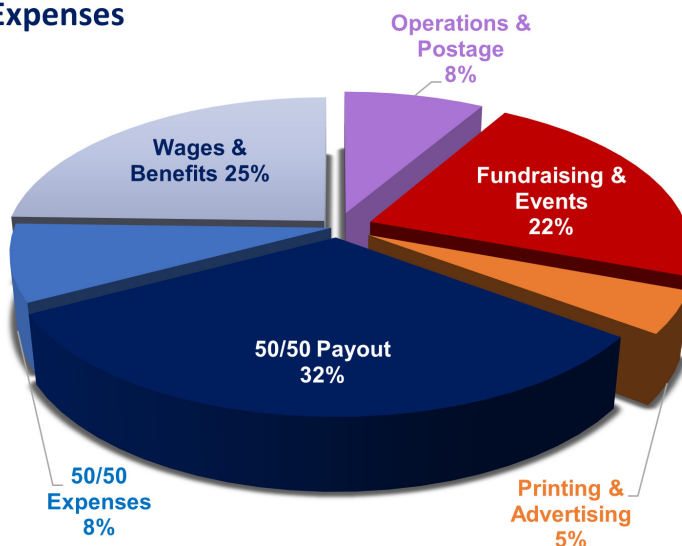
## Financial Summary For the year ending March 31, 2023

### Revenue



| REVENUE              | 2023               | 2022               |
|----------------------|--------------------|--------------------|
| Donations            | \$1,315,084        | \$623,059          |
| 50/50 Raffle         | \$503,855          | \$1,077,115        |
| Gifts-in-Kind        | \$118,721          | \$12,960           |
| Investment Income    | <u>\$43,852</u>    | <u>\$55,749</u>    |
| <b>Total Revenue</b> | <b>\$1,981,512</b> | <b>\$1,768,883</b> |

### Expenses



| EXPENSES                              | 2023                        | 2022                      |
|---------------------------------------|-----------------------------|---------------------------|
| Operations & Postage                  | \$71,912                    | \$100,100                 |
| Fundraising & Events                  | \$191,472                   | \$4,221                   |
| Printing & Advertising                | \$38,530                    | \$41,773                  |
| 50/50 Payouts                         | \$273,420                   | \$557,236                 |
| 50/50 Expenses                        | \$71,214                    | \$123,726                 |
| Wages, Benefits, PD                   | <u>\$210,147</u>            | <u>\$129,252</u>          |
| <b>Total Expenses</b>                 | <b>\$856,695</b>            | <b>\$956,344</b>          |
| Excess Revenue                        | \$1,124,817                 | \$812,539                 |
| <b>Transfers to LWDH</b>              | <b><u>(\$1,063,363)</u></b> | <b><u>(\$756,402)</u></b> |
| <b>Surplus (deficit) for the year</b> | <b>\$61,454</b>             | <b>\$56,137</b>           |

The Lake of the Woods District Hospital Foundation is committed to ensuring every gift we receive is stewarded with the utmost care and integrity and that your gifts have the greatest possible impact to patients receiving care at LWDH. It is with this in mind that we are always looking to improve both the costs to raise a dollar and return on investment ratios, in keeping with industry benchmarks. Please visit [www.lwdhf.com/reports](http://www.lwdhf.com/reports) to view our audited financial statements.

# Annual Donor Listing

David Abal  
Austin Abas  
Wayne & Millie Acheson  
Judi Achilles  
Denique Adams  
Eugene & Yvonne Ahlstrom  
Ian Ahvenniemi  
Richard Akman  
Kathleen Alcock  
Shirley Alcock  
Beverley Alcock  
Susan Alexiuk  
Carolyn Allanson  
Peter Allison  
Melany Almosara  
Rose Altmann  
Bernhard & Sylvia Altmann  
Michael Alvestad  
Walter & Connie Alward  
Anonymous (11)  
Brian & Leslie Apland  
Les W. & Gillian Armstrong  
Leonard & Susan Asper  
David & Ruth Asper  
Laurie Atherton  
Tamara Attanasio  
Shauna and Gerald Aubin  
Blaine Aucoin  
Margaret Avery  
Max Bachman  
Carolyn Bachman  
Sheryl Bailey  
Judy Bain  
Randy Baird  
Carla Baird  
Dianne Baker  
John M. & Catherine Baker  
Joyce Baker  
Byron Baker  
Megan Baker  
Kaye Balajadia  
Barry & Bonnie Baltessen  
Peter & Edeltraut Barber  
John & Sharon Barr  
Jeanette Barrett  
John & Margaret Bartkowiak  
Gordon Bastable  
David & Pam Baxter  
Marjorie Baxter  
Margaret & Randy Beahrs  
Penny Beal  
Vanessa Beck  
Doreen Belair  
John & Helen Belair  
Joan Belanger  
Ellen Belbas  
Florence Bellefeuille<sup>†</sup>  
Gary Ben  
Kris & Shirley Benidickson  
Bruce & Kathy Bennett  
Nadine Benson  
Lynn Bergman  
Marlene Bergman  
Bruce & Joyce Berry  
Brian Bertrand  
James & Geri Beveridge  
Sid Biliski  
Treena Bingham  
Vicki Bingham

Larry & Marjorie Birch  
Patricia Bisset  
Louis Bissonnette  
Marc & Lana Bissonnette  
Robert & Sandra Blake  
Tom & Sandra Bland  
Judy Boatman  
Josephine Bois  
Robert & Eleanor Bond  
Heather Bones  
G Denton & Leslie Booth  
Jim Borger  
Kayla Borup  
Carol Boucha  
Olivia Boucha  
Leon Boucha  
Lucien & Margaret Bouchard  
Melodie Bouchard  
Melody Boucher  
Darrell Boughton  
Gayle Bouvier  
Myron & Louise Bowen  
Curt Bowen  
Dr. Brian & Catherine Bowerman  
Ruth Bowiec  
Sheldon & Penny Bowles  
Elaine Bowman  
Charlene Branch  
Paul & Margaret Brett  
Patrick & Pamela Brett  
Frank & Suzzanne Bright  
Hubert Brodeur  
Ellen Brodigan  
Eric Brown  
Don & Valerie Brown  
David and Nicole Brown  
Donald Bruce<sup>†</sup>  
Patricia Buchanan  
Dee Buckle  
Melanie Buffett  
Robert Bulman  
Roy & Sandy Burchall  
Mervin Rico Bureros  
Phil & Pat Burke  
Alison Burnett  
Carol Burns  
Victoria Burns-Prouty  
Lori Burton  
Sylvia Burton  
Jack Cadieux  
Don & Angela Cain & Fediuk  
June Calder  
John & Candice Cameron  
Jane Campbell  
Kathleen Campbell  
Marlene Canfield  
Terry & Cathy Canfield  
Shirley Carbert  
Dolores Carlson  
Judy Carlson  
Dean Carrie & Carol Wilson  
Kelly Carver  
Nicole Casey  
Don & Jean Caul  
Richard & Gale Cederwall  
Violet Cederwall  
Dale & Martha Cederwall  
Matthew & Stella Cederwall  
Ed & Pam Chagnon

Jeanne Chagnon  
Claude Chapman  
Dorothy Chase  
Joe & Rose Chevalier  
Paul & Victoria Chevrefils  
Kevin Chipman  
Brock & Leanne Chisholm  
Leanne Chisholm  
Gam Choo  
Lois Christianson  
Nancy Cipryk & Greg Klassen  
Bob & Gale Clemmens  
Alex & Jan Coats  
Grant & Aynsley Cockshott  
Angela Coffell  
Jeff & Fiona Colegrave  
Allen & Gloria Colfer  
Sylvia Coma  
Valerie Cook  
Jim Cook  
Sandra Cool  
Steven Cooper  
Victoria Cory  
Bailey Coulis  
Dennie Courchene  
Steve Courtney  
Elizabeth Courtney  
Christopher Coward  
Sarah Creed  
Haylee Creed  
Maureen Cross  
Mark Cudney  
D'Arcy & Wendy Cuthbert  
Susan Cutler  
Rick & Lise Cyncora  
J. Edward & Margaret Czaja  
Lois Dale  
Stanley & Mary Danko  
Katherine Danko  
Leanne Davidson  
Sharlene Davis  
Dorothy Dawson  
Andrea Day  
Robert Day  
Hazel De Los Santos  
Daniel Dean  
Linda Delamere  
Jamie & Cynthia Delaney  
Mike Delaney  
Lauren Della Mattia  
Katherine Delorme  
Amy Depasquale  
Megan Derouard  
Linda Derouard  
Sharon Derouard  
Maribel Destura  
Clark Devins  
Ferg & Kathy Devins  
Mark & Carla Devlin-Scott  
Ian Ross Dewar  
Malcolm & Catherine Dewar  
Assunta Dewson  
Udaipartap Dhillon  
Cindy Dimitroff  
Bill & Kim Dingwall  
Mike & Beth Dingwall  
Cam & Laci Dingwall  
Kendra Dobinson  
Alexis Doerksen

Peter Doerksen  
Brent Doherty  
Jaca Domogcao  
Mary Ann Donnelly-Favreau  
Andrea Doucette  
Jackie Douglas  
Ken Douglas  
B.C. Douglas  
Bryce & Nicki Douglas  
Dr. Emily Drake  
Garry Dreger  
Marilyn Drew  
Kim Drewry  
Scott & Marilyn Duffield  
Doug & Eva Dufresne  
Glenda and Norbert Dufresne  
Antoinette Dufresne  
Donna Duggan  
Terry & Norann Dunbar  
Rob & Patti Edie  
Bradley Edie  
Olive Anne Edison  
O. Anne Edison  
Laurie Edmonds  
Janice Edwards  
Wray & Wendy Edwards  
Shannon & Ryan Ellard  
Murray & Judy English  
David & Carole Engstrom  
Judy Eriksson  
Jenna Erochko  
Catherine & Bob Erochko  
Estate of William Allan  
Thompson  
Ashleigh Everett & Stuart Murray  
Amy Fadden  
Tim Fafard  
Jacques & Paulette Fafard  
Pat Fair  
Debbie Fairfield  
Arthur & Jennifer Fast  
Robert & Sandra Faulds  
Alex & Evelyn Faulds  
Carol Favoni  
Michelle Favreau  
Gerald Favreau  
Evan Fawcett  
David & Nicole Fedirchuk  
Donald & Gladys Fedus  
Leonie Fernandez  
Marion Fish  
Ron Flavelle  
Dr. Stephane & Kailee Foidart  
Colleen Ford  
Denise Forsyth  
Ann Foster  
Peter & Lesley Fox  
William Fraser  
Joseph Fregeau  
Holly Ann Friesen & Dr. Joel  
Kroeker  
Ramona Fullmer  
Steven Funk  
Celia Gagne  
Dorothy Gair  
Scott and Diane Gammage  
Brian Gan  
Richard & Debbie Gan  
Lisa Gannon



The Annual Donor List is based on generous gifts received  
between April 1, 2022 and March 31, 2023.

|                              |  |                                 |  |
|------------------------------|--|---------------------------------|--|
| Melissa Garrett              | Haroldene Hanstead                     | Jennifer Jarvis                 | Gerald & Shirley Lajeunesse              |
| Colleen Garrow               | Celine Hanton                          | Cheryl Jarvis-Woods             | Wendy Lajeunesse                         |
| Rene & Linda Garrow          | John & Alixe Harbottle                 | May Javier                      | Roderick & Debbie Lamb                   |
| Eva Garrow                   | Jamie Harris                           | Melissa Jean                    | Joan Lamoureux                           |
| Kent Gate                    | Wilma Harrison                         | Nancy Johanson                  | Ray Landry                               |
| Wendy Gatrell                | Lauren Harvey                          | Susanne Johnson                 | Shelley Landry                           |
| Wayne Gauld                  | Brian & Ruth Hastings                  | Janice Johnson                  | Jane A. Lang                             |
| Stephanie Gauthier           | Marianne Hastman                       | Kevin & Deborah Johnson         | Chip and Deanne Lang                     |
| Sharon Geary                 | Janice Hatfield                        | Margaret Johnson                | Sandra Lang-Donald                       |
| Kelsey Geisel                | Charmaine Hay                          | Dela Rae Johnson                | Danielle Langer                          |
| Walter & Evelyn Genereux     | Ken & Gloria Heatherington             | Carolyn & Tim Johnson           | Garry & Diane Lapworth                   |
| Richard & Diane Gessner      | Frank Hechter                          | Lori Johnston                   | Angela Larman                            |
| Roberta Giasson              | John & Lisa Heimbecker                 | Kathryn Johnston                | Katrina Laurent                          |
| Judy Gibson                  | Cliff Heino                            | Dr. Kyle Jonathan               | Nora B. Lavoie                           |
| Jim Gilchrist                | Dr. T.J. Henderson & Dr. Robin<br>Krug | Chris Jones                     | Sean & Michelle Lawton                   |
| Dr. Sarah Giles              | Monique Henderson                      | Ethan Jones                     | Donalda Leckie                           |
| Jeff and Louise Gill         | James & Ashley Hendy                   | Grace Jorgensen                 | Evelyn Lentz                             |
| Daniel Girard                | Nancy Hendy                            | Jennifer Jurgens                | Arlene Lentz                             |
| Moe & Ruth Girard            | John Hendy                             | Sherri Kashuba                  | Larry & Karen Leroux                     |
| Al and Rhonda Glofcheski     | Jon Hensrud                            | Edward Kasprick                 | Frank & Marlene Leroux                   |
| Michelle Gobeil              | Melvin & Katharine Henton              | Debra Kasprick                  | Lyle & Karen Letain                      |
| Henry & Laurine Goerzen      | Brenda Herdman                         | Gerald & Catherine Kasprick     | Kurt Letain                              |
| Lana Goodman                 | Sherri Herr                            | Addyson Kasprick                | Elliot Leven                             |
| Becky Goodridge              | Leo & Joyce Hertz                      | Joey & Tracy Katz               | Karen Lewis                              |
| Guy & Lou Goodwin            | Bobby Hertz                            | Kathleen Kearney                | Valerie Lillico                          |
| Penny Goodz                  | Emily Hildebrand                       | Robert Keith                    | Richard Lindenschmidt                    |
| Mike & Debbie Goold          | Paul & Leanne Hilhorst                 | Angela Kelly                    | Richard Lindmeier                        |
| Heather Gordon               | Paul & Carol Hill                      | Irene Kember                    | Margaret Lindquist                       |
| Donald Gordon                | Roseanne Hill & Brad Blaisdell         | Sally Kendall                   | Barb Lindquist                           |
| Margaret Gordon              | Dan Hillis                             | Paul Kennedy                    | Janet Lindstrom                          |
| Marlene and Bob Gordon       | Dallas Hintz                           | Jodi Kerr                       | Marcia Little                            |
| Anna Lee Gordon <sup>†</sup> | Lynne Hoegi                            | Carol Kilpatrick                | Rosalind Livingston                      |
| Sandra Gosselin              | Ashley Hoffmeister                     | Gloria King                     | Eric Liznick <sup>†</sup>                |
| Cheryl Gow                   | Peggy Holland                          | Sherry King                     | Ethel Ljubic                             |
| Daniel & Cheryl Graham       | Gillian Holland                        | Peter G. Kirby                  | Jim & Debbie Lockhart                    |
| H. David & Ingrid Graves     | Lesley Hollis                          | Heather Kitt                    | Dan & Sue Loewen                         |
| Gerry Green                  | Irene Hollowell                        | Bruce Klaseen & Karen Dunlop    | Nicholas Logan & Christine<br>Skene      |
| Harry Green                  | Trevor and Valerie Holm                | Marla Klassen                   | Amanda Longe                             |
| Lorraine Green               | Dorothy Holmgren                       | Kevin & Deneen Klippenstein     | Estate of George & Kathleen<br>Loohuizen |
| Bev Green                    | Jutta Holmstrom                        | LaDon Klywak                    | Hannah Love                              |
| Cheryl Green                 | Sandra and Jim Homeniuk                | Patricia Knipe                  | Richard & Joanne Love                    |
| Jock Green-Armytage          | James T. and Margaret Hook             | Allen & Jeannie Kobylka         | Linda Love                               |
| Lorne & Gloria Greenwood     | Richard & Lori Hoppe                   | Kyle Koch                       | Rick & Judy Lovelace                     |
| Stacey Greer                 | Sandra Horbaty                         | Glen & Debbie Koch              | Stacy Lovell                             |
| Garth Grieder                | Dennis J. & Sandra Hosfield            | Gordon & Gail Konantz           | Olga Lukianchuk                          |
| Caitlin Griffith             | Sue Hovi                               | Don & Catherine Konantz         | Victor & Judy Lund                       |
| Rhonda Grist                 | Carolyn Hudson                         | Pat Kornas                      | Barbara Lundy                            |
| Barry & Carol Grosset        | Donald B. Hudson                       | Anne Kostantin                  | Brent Lundy                              |
| Janine Guenther              | Donna Hughes                           | Dr. Melanie & Bob Kowal         | Tania Lysak                              |
| Mercedes Guinto              | Jacqueline & Laurin<br>Hummelbrunner   | Joanne Kowalik                  | Lois MacDonald                           |
| Glen & Sue Gummeson          | Larry & Carolyn Hursh                  | Judith Kowalik                  | Marianne MacDonald                       |
| M. Therese Gunn              | Blair & Marian Hutchings               | Isabel Kowalik                  | Graeme MacDonald                         |
| Walter Gustafson             | Colleen Neil & Jeff Hynes              | Dean Kozak                      | Judy MacFarlane                          |
| David Gutknecht              | Ruth Illman                            | Estate of Lillian Francis Kozie | Darlene MacGillivray                     |
| H. Patricia Guy              | Erika Ingebrigstson                    | Liz Kristjansson                | Alf Jantz & Marilyn MacInnis             |
| Fay Gyenge                   | Ken Ingo                               | Randy & Debra Kruk              | Vita Macins                              |
| Becky Hailstone              | Diane Iriam                            | Judy Krumbacher                 | Dale MacKenzie                           |
| Sean & Jackie Hailstone      | Jim & Sandy Irish                      | Lesley Kuna                     | Dave MacLennan                           |
| David & Jo-Anne Haines       | Krystianna Isfeld                      | Richard Kurtz                   | Heather MacMurphy                        |
| Arnold & Mary Hall           | Glen & Karen Jackson                   | Sue Kurtz                       | Bruce MacNeill                           |
| Cathy Hall                   | Michael & Marion Jackson               | Dr. Brad & Kristen Kyle         | Wade MacWilliam                          |
| Roseann Haller               | Violet Jackson                         | Dr. David & Dominique Kyle      | Patrick & Dawn Magee                     |
| Colleen Halverson            | Paul Jackson                           | Dr. William & Eleanor Kyle      | Lisa Mak                                 |
| Esther Halverson             | Dr. Zahra Jaffer                       | Frank & Darlene La Belle        | Donna Makowsky                           |
| Tara Hambly                  | Bella Jandumon                         | Mary Lachapelle                 | David & Rosemary Malaher                 |
| James Hando                  | Camilla Jardine                        | George Laco                     | Nina and John March                      |
| Carolyn Hansen               | Alice Jardine                          | Georgina Laffin                 | Craig & JoAnn Marek                      |
| Mitch Hanstead               |  | Jocelyn Laffin                  |  |
| Diana Hanstead               |  | Marty & Lori Laffin             |  |

|                                |                                     |                                    |                              |
|--------------------------------|-------------------------------------|------------------------------------|------------------------------|
| Leonard E. Mark                | Tracy Munn                          | David & Elaine Pearce              | Erin Roberts                 |
| Lyn & Marie Marks              | Dale Munro                          | Catherine Pearson                  | Bryan & Heather Roberts      |
| Steven & Jennifer Marquis      | John & Bev Murray                   | Dr. Buzz Pedersen                  | Sean Roberts                 |
| Kelly Martin                   | Dr. Ken & Judy Murray               | Audra Penner                       | Jim & Rosemary Robertson     |
| Karyn Mason                    | Dr. Catherine Murray & Matt Johnson | John & Barbara Penner              | Randy Robertson              |
| Jane Mathews                   | Blake Murray & Nancy Riley          | Gerard Penney                      | Shirley Robertson            |
| Ellie Mays                     | Eric Myles                          | Andrea Pereira                     | Shea Robinson                |
| Lorne & Bonnie Mazur           | Kaitlin Myles                       | Edward & Diane Pereux              | Ross & Allana Robinson       |
| Bonnie McArthur                | Shirley Myles                       | Jamie Peters                       | Linda Rodegard               |
| Linda McClymont                | Seth Mymryk                         | Ryan Peterson                      | Albert Rogers                |
| Cheryl McClymont               | Denise Nault                        | Janet Peterson                     | Nadia Romaniuk               |
| Ed & Sherrell McCollm          | Denise Nault                        | Wendy Peterson                     | Lynn Ronnebeck               |
| Gordon & Lynne McCoy           | Lori Nelson                         | Catherine Petracek                 | Kaleigh & Eric Roscoe        |
| Paul & Lynne McCrea            | Greg & Cindy Nelson                 | Allan and Cheryl Petrie            | Lawrence Rosdobutko          |
| Darlene McCutcheon             | Keith & Linda Nelson                | Ron & Lorna Pettigrew              | John & Barbara Ross          |
| Jordan McDonald                | Patrice Nelson                      | Paul & Deb Pfrimmer                | Gail Ross                    |
| Larry McDonald                 | Joanne Neufeld                      | William Pigott                     | Guy & Marie Ross             |
| Janice McDonald                | Margaret Neufeld                    | Muriel Pirie                       | Catherine Rowlandson         |
| Jessica McDonald               | David & Tori Newall                 | Kimberley Pirie-Milko              | Joseph Roy                   |
| Pat McDougald                  | Chantalle Newell                    | Candice Pitura                     | Gordon Ruczak                |
| Don & Beverley McDougald       | Brian Newton                        | Stan & Lorraine Plett              | Robert Rummery               |
| Murray & Melanie               | Dorothy Nicholls                    | James Podjan                       | Janet Rutherford             |
| McDougald                      | Randy & Lori Nickle                 | Ron & Mary Ann Poirier             | Sheldon Rutledge             |
| John & Kelly McDougall         | Rod and Nicole Nicolls              | Brenda Poliuies                    | Josef Ryan                   |
| Judith McEwan                  | Maryanne Nilson                     | Bobby-Lynn Pollard                 | Colin Ryan                   |
| Raymond & Lynne-Anne McFeetors | Dr. Laura Noak                      | Bruce & Linda Ponton               | Jodie Saarinen               |
| Elizabeth McGogy               | Ron & Lynne Nordlund                | Rick & Donna Portman               | Dr. Neil Salter              |
| Linda McInnes                  | Sheila Norrie                       | Vicki Potvin                       | Emmanuel Salvandor           |
| Sydney McInnis                 | Paul & Susan Norton                 | Donna Price                        | Isobel San Martin            |
| Denise McInnis                 | Patricia Norton                     | Rhonda Pritchett                   | Lee & Lois Sander            |
| Don & Susan McIntosh           | Ron & Claire Noseworthy             | David & Natalie Procyshyn          | Saniatha Santiago- Lamarche  |
| Janis McKeag                   | Bobbi Novak                         | Bob & Marnie Puchniak              | Colette Satliff              |
| Patti McLaughlin               | Joe & Pauline Novak                 | Raiza Pumatong                     | John Saville                 |
| Don & Ardythe McMaster         | Olive Novelli                       | Brian & Kathryn Purdy              | Linda Sawchuk                |
| Laura McMaster                 | Matthew Nowak                       | Richard & Karen Pyper              | Dr. Robert Scatliff          |
| Rory & Glenda McMillan         | Emily & Lee Nuttall                 | Debbie Quinn                       | Richard & Tiffany Scheibler  |
| Ester McMillian                | Delos & Ella Nyberg                 | Betty Quinn                        | Peter & Andrea Scheibler     |
| Joanne McMillin                | Shaune Oakley                       | Charlotte Quinton                  | Jasmine Scheurmann           |
| William McMullen               | Peter Obendoerfer                   | Beverly Raby                       | Una Schlievert               |
| Michael McMullen               | Joan Odium                          | Ray Racette                        | Chantelle Schneider          |
| Doug McMullen                  | Mike & Cheryl O'Flaherty            | Michael & Linda Radcliffe          | Norine Schram                |
| Robert McNally                 | Mary Margaret O'Flaherty            | Deborah Ramsay                     | Angela Schussler             |
| G. Earl & Lynne McNicholl      | Kathleen O'Flaherty                 | Chantal Rancourt                   | David & Patricia Schwartz    |
| Gord McTaggart                 | Beverley Oldford                    | Colleen Randall                    | Judy Schwartz                |
| Lorna McTaggart                | Dr. Meghan Olson                    | Edward J. Ransby                   | Bill & Michelle Scribilo     |
| Pat & Lee Meagher              | Laura Olson                         | Henry Rasmussen                    | Dave Scrimger                |
| Elizabeth Medeiros-Popovacki   | Robin Olson                         | David Rattray & Polly Craik        | Carole Scriver               |
| Jordan Mejia                   | Walter & Lois O'Neill               | Roy & Sheryl Rawn                  | Claire Sedesky               |
| Kim & Brooks Mejia             | Robert Onysko                       | Lorne & Patricia Redden            | Steve & Marjorie Seitler     |
| Orlo & Shelley Mejia           | William Opzoomer                    | Allen Redwood                      | Rod & Jeannie Senft          |
| Lucia Melnick                  | Jerry & Joan Ortlieb                | David & Laura-Lynn Reeves          | Lizette Sequina              |
| Lois Mempin                    | Dennis & Alice O'Sullivan           | Sheelagh Reid                      | Brian Serant                 |
| Hubert Mesman & Renee          | Shawndel O'Sullivan                 | Malcolm & Doreen Reid              | Wayne & Maria Shapland       |
| DeMayer Mesman                 | David Ouimet                        | Dr. Jillie Retson                  | Anthony & Susan Sharp        |
| Shawn Metail                   | Judith Owen                         | Jim and Roberta Retson             | Katie Sharpe                 |
| Trudy Millar                   | Heather Page                        | Daniel & Laurie Reynard            | Gail Shaw                    |
| Wilma Miller                   | Brenda Paley                        | Nancy Reynolds                     | Gordon & Katherine Shawcross |
| Art Mior                       | Courtney Palmer                     | Laura Reynolds                     | Karen Sherrington            |
| Stephen Mitchell               | Patti Palson                        | Jess Rheault & Clint VanWallegghem | Ward & Shelley Sherrington   |
| Margaret Moncrief              | Don & Helen Parfitt                 | Muhammad Riaz                      | Rod & Patricia Shewchuk      |
| Val Mongrain                   | Nettie Parker                       | Mike & Cate Richards               | Susan Shiska                 |
| Michael & Jane Moore           | Susan Parkes                        | Robert & Penny Richards            | Perry & Roberta Shumka       |
| Dr. Sean & Fay Moore           | Alda Parmeter                       | Beverley Richardson                | Angie Shura                  |
| Shannon Moore                  | Betty Parr                          | Hartley & Heather Richardson       | Henry & Marijane Sieradzki   |
| Claire Morden                  | Bill & Theresa Parrish              | Shirley Richardson                 | Lesa Sieradzki               |
| Marie Morden                   | Kate Paterson                       | James & Leney Richardson           | Carlos & Maria Silva         |
| Sherry Moreau                  | Andrew & Lisa Paterson              | Fred & Jan Richardson              | Mark & Zoe Simkin            |
| Haelee Morgan                  | David & Wendy Paton                 | Jan Richardson                     | Stephen Simons               |
| Peter and Sharon Morris        | Heather Patterson                   | Greg & Janet Rickford              | Marilyn Simonsen             |
| Allan & Mary Morris            | Tom Patterson & Kelly Martin        | Thomas Larry Rigney                | John Simundson               |
| John & Bonnie Morton           | Kenneth Paul                        | Hugh Riley                         | Dawn Skeavington             |
| Terry & Susan Moss             | Sandra Paul                         | Sharon Rimstad                     | Doris Skillen                |
| Sean Mundy                     | Janet Paulson                       | Lynn Rioch                         | Ellen Smirl                  |
| David Mundy & Lee Ingebrigtsen | Gabrielle & Ben Pawlowski           | Dr. Jean Marc Rizk                 | Gordon Smith                 |
|                                | Marlene Pawlowski                   |                                    | Karla Smith                  |

† denotes deceased

Lori Smith  
 Barry & Shelley Smith  
 Joan Smith  
 Gordon & Gail Smithson  
 Anne Smyth  
 Dr. Laurel Snyder  
 Allen & Virginia Snyder  
 Yana Sobiski  
 Andrea Socholotuk  
 Garry Socholotuk  
 Vickie Soderman  
 Scott & Janice Sparkman  
 Warren & Maureen Spencer  
 Phyllis Spencer  
 Nancy Spencer  
 Liane Spendlow  
 Laurie St. Denis  
 Roland St. Germain  
 Andre & Eveline St. Hilaire  
 Gisele & Tracey Stack  
 Robert Stafford  
 Mary Stahls  
 Gwen & Gary Steiman  
 Max Steinkopf  
 Kaila Stepanik  
 Dave & Karen Stepanik  
 Antony & Nancy Stephens  
 Jill Stevens  
 Judi and Bob Stevenson  
 Paige Stevenson  
 Teresa J. Stevenson†  
 Donna Stewart  
 Peter & Glennis Stewart  
 Molly Stouffer  
 William & Susan Straight  
 Kyra Strath  
 Ron & Judy Stuart  
 Tanya Sumner  
 Dave & Kelly Sundmark  
 Angus Sutherland  
 Donald Sutherland  
 Olivemae Sveinsson  
 Laurel Syder  
 Ted & Julie Szajewski  
 Nedean Tacknyk  
 William & Donna Tait  
 Robert & Trudy Tait  
 Barry & Elane Talbot  
 Noel Tanabe  
 Norma Tanner  
 Lyndat Tate  
 Crystal Taylor  
 Gordon Taylor  
 Nicole Theriault  
 Rainette Therrien  
 Janet Thomas  
 Tom Thompson  
 Robert Thompson  
 Brianna Thompson  
 Alan G. & Doreen Thompson  
 Graeme & Sara Jane Thomson  
 Valerie Thomson  
 Joelle Thomson  
 Ami Thorsteinson & Susan Glass  
 Lee Anne Tibbles  
 Paul & Shirley Tilley  
 Andrea Tiopo  
 Edward Titley  
 Tavia Tivy  
 Sheila Toderian  
 Keanan Toews  
 Sharon Toms  
 Mike Tooke  
 Helen Toovey  
 Kenneth Toovey

Joanne Toth  
 Doreen Toth  
 Shelby Tourond  
 Karla Treadway  
 Mira Trebilcock & Meaghan Underwood  
 Kendall Tremback  
 Paul & Donna Tremblay  
 Toni Trepanier-Maenpaa  
 Terry & Shirley Tresoor  
 Sandra Triskle  
 Scott Turnbull  
 Brian & Susan Turner  
 Chantal Tycholiz  
 Allan & Penny Ufland  
 Jean Ukrainec  
 Kevin Van  
 Kelsie Van Belleghem  
 Dave & Maxine Van Dam  
 Liam Van De Watering  
 Dan Van Wallegghem  
 Allan Van Wallegghem  
 Desiree Vanderwel  
 Dr. John & Beth Vaudry  
 Stephanie Verplaetse  
 Donald & Donna Viinikka  
 Lori Vogrig  
 Nick & Christina Voth  
 Michelle Wagenaar  
 Bud & Faith Wagner  
 Kevin & Mary Walkoski  
 J. Philip Walsh  
 Philip Walsh  
 Robert Wares  
 Merle Warner  
 Joan Warner  
 Brianne Warnick  
 Gordon & Patricia Warnick  
 Jessica Weinhardt  
 David & Susan Wellard  
 Doug & Holly Wells  
 Jaclyn Wells  
 Arthur Wennerstrom  
 Sydney Wetendorf  
 Jean Wetendorf  
 Ian Whitcombe  
 Dawna White  
 Norma White  
 Jane Whiting  
 Dave & Linda Wideman  
 Dr. Shannon Wiebe  
 Gord Wiebe  
 Pamela Wilcox  
 Richard & Rosemary Wiley  
 Dan & Loretta Williams  
 Diane Wilson  
 Kate Wilson  
 Matt & Shannon Wilson  
 Eileen Wilton  
 Mark Winkler  
 Jolanda Winlove-Smith  
 Blair Winstanley  
 Gary & Joan Wise  
 Dr. Casey Wong  
 Dr. Murray Workman  
 Terry & Melba Wright  
 Tara Wyder  
 Gisela Yager  
 Betty Yarechewski  
 Shawn Yarechewski  
 Dalton & Jazmin Yeomans  
 Bradley Zander  
 Tammy Zebruck  
 Elene Zikman  
 Arcade & Bailey Zilinski  
 Bill & Gwen Zroback  
 Gayle Zrum  
 Sandra Zurkan

## Corporate Partners

Aevi Spa Salon Boutique  
 Anonymous (4)  
 Bayview Toyota  
 BDO Canada LLP  
 Beacon Financing Inc.  
 Beaver Brae Secondary School  
 Bedgear  
 Bell Media (CTV)  
 Bell's Septic  
 Board of Health for the  
 Northwestern Health Unit  
 Branstone Financial Strategies  
 Brennan's Jewellers  
 C.U.P.E. Local 191  
 Canadian Royal Purple Society  
 CARSTAR Kenora  
 Century 21 Northern Choice  
 Realty Ltd.  
 CIBC (Kenora)  
 City of Kenora  
 Copperfin Credit Union Kenora  
 CrossFit Core KTown  
 CUPE Local 1072  
 D&R Plumbing & Heating  
 Devlin Timber Company Ltd.  
 Dingwall Ford Sales - Dryden  
 Dingwall Ford Sales Ltd.  
 Eric and Carol Johnson Fund  
 The Winnipeg Foundation  
 Firefly  
 Flowers By The Lake  
 Form Medical Aesthetics  
 FSET  
 G.J. Tallon Law Corp.  
 Gardner House Tenants Assoc.  
 Gift Funds Canada  
 Godbout Auto Services Inc.  
 Grace Anne II Yacht & Lodge  
 Grant Memorial Church  
 HAIR2DYE4  
 Harbourfront Oil and Vinegar  
 Hook, Seller, & Lundin LLP  
 Inland Made  
 Jarnel Contracting Ltd.  
 JBS Foundation Inc.  
 Joe LaLeune  
 John Andrews Foundation  
 Keewatin Public School - Staff  
 Kenora & L.O.W. Regional  
 Community Foundation  
 KCDSB  
 Kenora Chiefs Advisory Inc.  
 Kenora District Campowners  
 Kenora Home Hardware  
 Building Centre  
 Keystone Lock & Safe  
 Kingfisher Boats Inc.  
 Kinsmen Club of Kenora  
 KPMG Winnipeg  
 Krown Kenora  
 Lake Navigation (Kenora LTD)  
 Lake of the Woods Electric  
 Lake of the Woods K40 Club  
 Lakeview Condominiums  
 Lawton Partners  
 Lions Club - Kenora LOW  
 Marv Forsythe Memorial Golf  
 Tournament  
 Mayberry Fine Art  
 Medigas Manitoba Limited  
 Millwaters Holdings Ltd.  
 MNP LLP  
 Moncrief Construction Ltd.  
 Northern Harbour Marina  
 Northern Hearing  
 Northern Peninsula Road Assoc.  
 Novak MacDonald Fund  
 Oakwood Roofing & Sheet  
 Metal Co. Ltd.  
 OECTA - Ontario English  
 Catholic Teachers Association  
 Ontario English Catholic  
 Teacher's Assoc. Kenora Unit  
 Orangetheory Fitness, Taylor  
 Panorama Ridge  
 Condominiums Corp #3  
 Parrish & Heimbecker Limited  
 Pickerel Lake Cottager Assc.  
 Pioneer Construction Kenora  
 PLCA  
 Price Family Foundation  
 Print Gear Inc.  
 Pro Auto Glass  
 Quadrant Private Wealth Corp.  
 Qualico Developments Ltd.  
 Re/Max Northwest Realty LTD  
 Red River Cooperative Ltd.  
 Richard Chale and Barbara  
 Williams Family Foundation  
 Richardson Wealth Private  
 Family Office  
 Robinson Family Foundation  
 Royal Bank of Canada (Kenora)  
 Royal Canadian Properties Ltd.  
 RTO ERO District 26 Kenora  
 Senft Family Foundation  
 Seven Generations Education  
 Institute - Kenora Campus  
 Shelter Canadian Properties Ltd.  
 Shewchuk, Ormiston, Richardt  
 & Johnson LLP  
 Sierra Construction  
 Simon Imports Ltd.  
 Solace  
 Solid City Rentals Ltd.  
 St. Marguerite Bourgeoys School  
 St. Nicholas Church  
 Standard Insurance Brokers Ltd.  
 Strategic Charitable Giving  
 Foundation  
 Talbot Marketing  
 The Beer Store & Staff  
 The Devins Network  
 The Gail Asper Family Foundation  
 The Paterson Family Foundation  
 Tim's Paint & Trim  
 Tuesday Women's Business  
 Curling League  
 United Fighter Kenora  
 Upriver Media Inc.  
 Valleyview School Council  
 Wawanesa Insurance Company  
 Weyerhaeuser Company Ltd.  
 Wheelhouse Cycle Club  
 Woodlake Marine Ltd.  
 WSL Sport & Leisure and Tall  
 Pines Marina



Our goal is to inspire community giving at all levels to improve healthcare outcomes for the people of Kenora District and beyond.

LWDH Foundation  
21 Sylvan St. West  
Kenora, ON | P9N 3W7  
Phone: 807-468-9861 x2469  
E-mail: [lwdhf@lwdh.on.ca](mailto:lwdhf@lwdh.on.ca)  
Charitable Registration (BN) 13710 5243 RR0001

Let's Stay in Touch!

 @lwdhf

 @lwdhf

 [www.lwdhf.com](http://www.lwdhf.com)  
[www.lwdhf5050.ca](http://www.lwdhf5050.ca)

Donate Today!

