

Helping your hospital help you

Spring/Summer 2017



LWDHF

The Lake of the Woods District Hospital Foundation is dedicated to fundraising in partnership with our community to meet the medical equipment and facility needs of the Lake of the Woods District Hospital

In this issue:

Over \$608,000 for your hospital!

\$1.2 mil CT Scan Renewal Project has officially launched.

From our generous community...

Winter events re-cap & upcoming summer events



Over \$608,000 for your LWDH!

NEW EQUIPMENT @ LWDH 2016-17

REPLACEMENT:

Patient Ceiling Lifts	\$90,000
Coagulation Analyzer + MediTech Interface	\$75,000
Wireless Fetal Monitor	\$40,396
Infant warmer/resuscitation beds (2)	\$38,000
Fetal Monitor – 2 nd unit	\$31,000
50lb. washing machine	\$26,000
Blood bank system	\$10,000
Ibis tilt-in-space wheelchair	\$9,700
Bilirubin treatment blanket (2)	\$8,400
Dialysis treatment chair	\$6,500
Wheelchair scale	\$6,500
Medical bed	\$3,500

NEW:

Bariatric bed	\$26,000
Glidescope with pediatric attachment	\$22,500
Rapid infusion blood/fluid warmer	\$21,000
ImmunoAssay analyzer backup	\$11,000
Compartmental Pressure Monitor	\$3,795
Oasis sleep chairs (2)	\$5,800

ADDITIONAL EQUIPMENT PURCHASES:

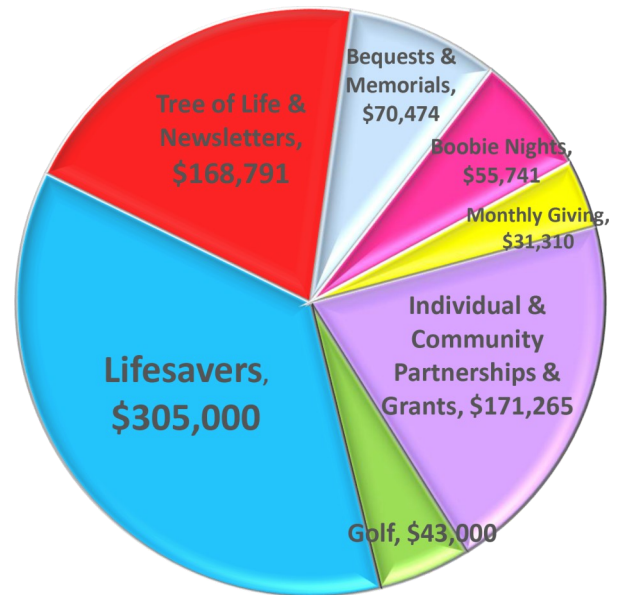
Lifepack Monitors (3) – 3 East & ICU	\$91,996
Orthopedic Equipment – Surgical Services	\$22,903
Blood Bank Refrigerator	\$13,541
Chemistry Analyzer – Laboratory	\$10,621
Moleculight System – Wound Clinic	\$6,867
Palliative Care Family Room	\$3,747
Mental Health Activity Table	\$513

Thank you for helping us transfer **over \$608,000** to the Lake of the Woods District Hospital! Your generosity and commitment to your hospital ensures that LWDH's dedicated staff have what they need to take care of you when you need them. You are truly making a difference for your hospital, your community, your family and friends! Thank you!

Newly refurbished Palliative Care Family Room



LWDHF 2016-17 FUNDING SOURCES



In partnership with your community, LWDHF is dedicated to raising funds solely for new equipment and facility upgrades at LWDH. The chart above shows just how you choose to support your hospital in 2016-17; helping LWDHF transfer over \$608,000 to your hospital for medical equipment benefitting patient care.

Chemistry Analyzer—Laboratory



Wireless Fetal Monitor—Thank you Dingwall Group!



CT Scan Renewal Project

GOAL: \$1.2 MILLION

\$450,000 has already been pledged towards this important community project!

LWDHF has launched the CT Scan Renewal Project. Over the next year, LWDHF will be raising funds for a **new CT Scan for the Diagnostic Imaging Department**.

The current CT Scan at LWDH is 12 years old and nearing the end of its useful life. Parts are no longer manufactured for repairs which means that if something needs to be replaced on the CT Scan and parts cannot be located, your hospital would be without the CT. It would be detrimental to patient care at your hospital.

The new CT Scan will have improved capabilities including the following:

- Paediatric scanning will now be available on site.
- Improved image quality: 160 slice (thickness of scan) vs. current 16 slice; providing improved diagnostic capabilities with enhanced detail in images.
- Produces 30 images per second; the improved efficiency offers shorter wait times and more patients scanned.
- Patients up to 650 lbs can be scanned vs. the current 350 lbs max capacity.
- Improved radiation dose.
 - Ability to utilize the CT for additional types of screening due to radiation dose being similar to a regular x-ray i.e. chest CT for lung cancer screening.

"Today we needed to do three potentially lifesaving scans and the shift isn't even over yet! One may have had a dangerous blood clot in the lungs, one may have had a possible bleed in the head, another who had an abdominal condition that could have been potentially fatal: these are all the kinds of things that we are looking at all the time."

-Dr. Sean Moore, Chief of Emergency Medicine, LWDH

The CT Scan is an important piece of diagnostic equipment essential to maintaining the quality of care available at LWDH. Over 4,300 scans were performed last year.



We need your help to keep this essential service and equipment available at your hospital.

100% of your support stays right here to help your hospital, your community and your family!

HERE'S HOW YOU CAN HELP:

- Make a donation! Every little bit adds up. You can send your donation with the insert and envelope sent to you with this newsletter. Or, donate online at www.lwdhf.com
- Make a pledge commitment or sign up for monthly giving. You can choose to pledge a specific amount over a period of time that works best for you.
- Participate in one of LWDHF's summer events!
- Be creative and host your own event! We've had families raise money through cutting their hair; bottle drives, bake sales and lemonade stands. We love it when our supporters think outside the box!

DID YOU KNOW?

CT Scanners provide radiologists with critical information to diagnose and treat a variety of disorders and illness. They:

- Quickly provides full body imaging in major trauma patients, detecting internal injuries and bleeding
- Diagnose muscle and bone disorders, such as bone tumours and fractures

- Pinpoint the location of tumours, infections or blood clots
- Guide procedures such as surgery, biopsy and radiation therapy

- Evaluate soft tissues such as the brain, liver and abdominal organs
- Diagnoses of symptoms such as pain or dizziness
- Stroke protocol and blood clots

LWDHF Winter & Spring Events Re-Cap

\$45,000 @ HOCKEY FOR HEALTH—3 ON 3



After a brief hiatus, Hockey for Health 3 on 3 made a fantastic comeback to both Kenora and Keewatin Arenas April 6th-9th, 2017.

16 teams registered in the event in novice through open divisions, and came together with the contribution of players, family, friends and sponsors to raise over **\$45,000** for LWDHF's CT Scanner renewal project.

The top 2 fundraising teams in each division were guaranteed a spot in the championship games on Sunday.

Thank you to our sponsors Forest Helicopters, 89.5 the Lake, Carstar Kenora, Aqua i Laser, Copperfin Credit Union, Donny B, Lake of the Woods Girls Hockey, Lee's, CIBC, Lake of the Woods Minor Hockey, Lake of the Woods Brewing Company, Dr.Nadine Hoshwa, Q104 and all of our supporters for this years event. See you on the ice next year!



The top 2 fundraising teams in each division squared off in action filled games on Sunday, April 9th at the Kenora Recreation Centre, those teams included: Novice **Boneheads** (\$3,211.00) and **Rebels** (\$1,712.75).

In the Atom division: **Higher Standards** (\$4,529.37) and **D&R Zambronies** (\$3714.85).

In Peewee: **Raging Angels** (\$5,747.20) and **LOW Snipers** (\$4,277.60) and in the

Open division: **Copperfin Lakers** (\$3,142.05) and **Ice Breakers** (\$2,814.75).

Our top tournament fundraisers were the Peewee Raging Angels, who are no strangers to the tournament and fundraising and managed to secure over \$5,000 for their team. Congratulations Raging Angels!

29TH ANNUAL TREE OF LIFE CAMPAIGN



Thank you for honouring and remembering your loved ones through this annual Kenora holiday tradition!

CURLING FOR A CAUSE



Thank you **89.5 the Lake** CJRL - Kenora for hosting the Curling for a Cause funspiel over the Winter Carnival weekend! Your support helped raise **\$2,642** for your hospital which will go towards purchasing a new sleep chair.

COMMUNITY SUPPORT



Thank you Royal Canadian Legion Branch 12 Kenora for your donation from the 2016/17 Poppy Campaign of **\$3,200** to purchase a Barton H250 Convertible Chair to help inpatients and their rehabilitation.



A great big Thank You goes out to Steven Wolf, Michael Henry, Josh Wolfe and Jason Bowes for hosting 'Formation', an evening of classical and contemporary music and your generous donation of **\$550** to LWDHF.



Isaac and Adam Wykes got a haircut! Together, the duo surpassed their goal and raised **\$2,370** for your hospital, and their luscious locks will be donated to be made into wigs for cancer patients.



Thank you **Dingwall Group** for your dedication to bringing the wireless fetal heart monitor to your hospital! Your commitment allowed your hospital to move forward and bring the wireless fetal heart monitor to your hospital knowing that funding was coming!



Thank you Kenora AAA Midget Thistles for your generous support of LWDHF through Pink the Rink at the Kenora Recreation Centre—raising **\$1,150** supporting cancer care at LWDH.



Find us on Facebook to see more photos and updates throughout the year!

Upcoming Summer Events

Q-MUNITY BBQ & TEDDY BEAR PICNIC

Saturday, June 17, 2017

Anicinabe Park 11:00am—2:00pm

Join LWDHF at Anicinabe Park with the Q Crew on **Saturday, June 17th!**

We're looking forward to another great day for a free BBQ, the Teddy Bear Triage Tent, fun and games, and more!

Contact LWDHF to volunteer—we'd love to have you join us!



Q104 Cash Draw
Win up to \$10,000!

Get your Q104 Cash Draw tickets now, at Q Headquarters or LWDHF offices during regular business hours or anywhere the Q Crew are this summer!

Lottery License #M749559



21ST ANNUAL MNP/HOSPITAL FOUNDATION

CHARITY GOLF CLASSIC

Thursday, July 20, 2017

Kenora Golf & Country Club

If you or your business would like to become a sponsor at this year's Charity Golf Classic, or would like to donate to the silent auction, please contact LWDHF!



12TH ANNUAL LIFESAVERS DINNER & AUCTION



Save the date for **Saturday, August 12, 2017** at the Royal Lake of the Woods Yacht Club for the 12th Annual Lifesavers Dinner & Auction!

A formal invitation will be sent out this Spring; however, new guests are always welcome! Please contact LWDHF to make your reservation today.

This year's dinner and auction is chaired by Catherine Konantz, and her dynamic committee of Nicki Douglas, Colin Foster, Lisa Paterson, Lisa Heimbecker, Karen Dunlop and Cindy Behrsin.

We'd like to extend a heartfelt thank you to each of our sponsors for Lifesavers 2017 for your commitment this year. Thank you! See you on the lake this summer!



2017 TITLE SPONSOR



THANK YOU TO OUR 2017 LIGHTHOUSE SPONSORS!

The Bryce & Nicki Douglas Family
David & Ingrid Graves and Family
Bob & Deirdre Kozminski
Andrew Paterson and Family

Sandy & Debbie Riley and Family
Larry & Carolyn Hursh
Guy & Lou Goodwin
Gerry & Barb Price

Arni Thorsteinson & Susan Glass
Rod & Jeannie Senft and Family
James Borger & Melanie Sifton-Borger
Paul & Carol Hill

There is still time to join our Lighthouse Sponsors for 2017! Contact any committee member, or LWDHF!

OUR NEEDS ARE ONGOING

The Ontario Ministry of Health and Long Term Care covers on average, 80% of your hospital's operating costs. This limited funding for healthcare increases the financial pressure for your hospital in addition to the fact that none of this funding is designated to cover capital expenses. There is not a matching program from the Ministry to help purchase equipment, which leaves LWDHF to raise the funds needed, dollar for dollar.

Your hospital has identified over \$3 million in capital equipment and infrastructure needs over the next 2 years. The list shown to the right is a portion of what is needed by your hospital to ensure quality medical care remains available to your community at LWDH.

WHO IS LWDHF?

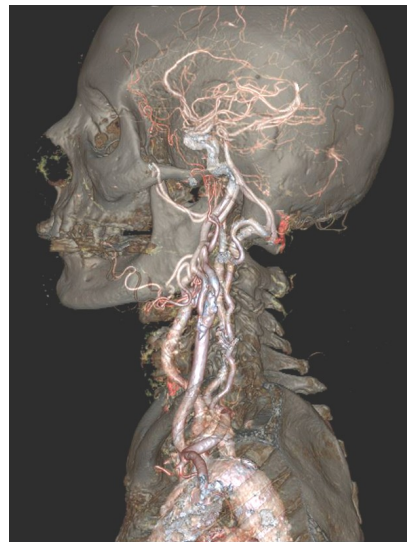
The Lake of the Woods District Hospital Foundation was established in 1992 and continues to be the lifeline between your community and your hospital.

LWDHF is governed by an eleven member board which meets monthly; has two full time employees and benefits from over 2,000 volunteer hours per year.

We are dedicated to raising funds for the purchase of medical equipment and capital infrastructure. Since our inception, we have transferred over \$17 million to Lake of the Woods District Hospital (LWDH) which was initially constructed in 1929, and has received several additions over the years.

LWDH EQUIPMENT WISH LIST, 2017-18

CT Scan (replacement of 12-year old unit)	\$1,200,000
MALDI-TOF Microbiology System	\$250,000
Adult Echocardiography report + license	\$100,000
Adjustable Patient Beds x4	\$24,000
Vital Signs Monitors x3	\$10,500
Dialysis Chair (<i>funded by donor</i>)	\$8,300



The new CT Scan will have improved diagnostic capabilities with enhanced details in images.

LWDHF BOARD OF DIRECTORS, 2016-17

CHAIR	Anthony Sharp	Base Manager (Kenora) Ornge Air Ambulance
EXECUTIVE MEMBERS	Holly Friesen	Owner and Artist, HAF Art Studio & Gallery
	Jackie Hailstone	General Manager, CIBC Banking Centre
DIRECTORS		
Bill Scribilo	Owner, Century 21 Reynard Real Estate	
Brock Chisholm	Manager, Rehabilitation Dept., LWDH	
Dominique Kyle	General Manager, Grace Anne II Yacht & Lodge	
Marc Bissonnette	Owner, Bell's Septic & Environmental Services	
Carter Friesen	General Manager, Q104 Kenora	
Kim Riediger	Associate, Hook, Seller & Lundin LLP	
STAFF		
Jess Rheault	Executive Director	
Andi Scheibler	Development Coordinator	
Lindsay Whitaker	Operations Assistant	

Ways to give to LWDHF...

*Why not make a donation today?
100% of your support stays within your community!*

Memorial Giving

A memorial gift to LWDHF provides a meaningful way to remember your loved ones. Family and friends have an opportunity to donate towards a lasting tribute set up as a memorial fund. Memorial gifts are recognized on our Donor Board when accumulated donations for the fund reach \$1,000.

Monthly Giving

Did you know that for as little as \$5 per month, you can make a difference in the quality of medical care available at your hospital? 1,000 donors contributing \$25 per month, works out to \$300,000 per year for your hospital! Imagine the possibilities for your hospital, our patients and your community!

Planned Giving

Including LWDHF in your will ensures your support for a cause you care about will continue - even after you're gone. By choosing to designate to our endowment fund, your gift continues to give, benefitting your family and your community forever. You can also take comfort in knowing that your gift will lessen the tax burden on your loved ones when transferring your estate.

Please contact LWDHF to discuss your planned giving options such as bequests, gifts of life insurance, RIFs or RRSPs. Final arrangements should be made through your financial advisor.

*We need your help to ensure quality medical care remains available at your hospital.
We encourage you to be a part of investing in a healthy community by making a financial donation to LWDHF today. We can all make a difference, one contribution at a time!*

Jess Rheault, Executive Director would love to take the time to meet with you face to face to answer any questions you may have. Please contact LWDHF offices to make an appointment.

Printing of this publication is generously provided by the team at Lowerys. Thank you Lowerys!


Lowerys
Your local office supply experts
1-800-465-3989

Community businesses like Lowerys allow LWDHF to give more back to your hospital. Support your community by shopping at your local businesses!



Thank you
for helping
your hospital
help you!



21 Sylvan Street West | Kenora, ON | P9N 3W7
Tel: (807) 468-9861 x2419 | Fax: (807) 468-6051
lwdhf@lwdh.on.ca | www.lwdhf.com

