



LWDHF

The Lake of the Woods District Hospital Foundation is dedicated to fundraising in partnership with our community to meet the medical equipment and facility needs of the Lake of the Woods District Hospital.

Spring 2016

YOU Made a Difference—\$812,000 for Your LWDH!

Thank you for helping us transfer over \$812,000 to the Lake of the Woods District Hospital to purchase much needed medical equipment! Your generosity and commitment to your hospital made this possible! Thank you for choosing to make a difference!

The Lake of the Woods District Hospital does not receive government funding for equipment purchases and upgrades. LWDHF is proud to work in partnership with our donors and community in ensuring that quality medical care remains available at your hospital! Your support ensures that LWDH's dedicated staff have what they need to take care of you when you need them! You are truly making a difference for your hospital, your community, your family and your friends! Thank you!

Thanks to you! New at LWDH!

| | |
|--|-----------|
| ICU + ER Central Monitoring Systems | \$400,000 |
| OR Table—Surgical Services | \$84,460 |
| PCA Pumps x6 <i>Patient Controlled Pain Management</i> | \$30,000 |
| Abdominal Retractor <i>Surgical Services</i> | \$19,455 |
| Cataract Instruments <i>Surgical Services (Kenora Lions)</i> | \$15,414 |
| Neonatal Monitors x3 <i>Maternity Ward</i> | \$13,029 |
| E-Record Cameras—Med Records | \$12,000 |
| Microscope—Laboratory | \$11,000 |
| Meal Delivery System <i>Nutrition & Food Services</i> | \$9,976 |
| Pressure Reduction Mattress x2 <i>2E Chronic Care & 3E Recovery Rooms</i> | \$7,470 |
| Pediatric Glidescope <i>Surgical Services</i> | \$5,965 |
| Transport Stretcher <i>Diagnostic Imaging</i> | \$3,332 |

**T
H
A
N
K
Y
O
U**



LWDH RNs Becca Forsyth and Randi Hutchinson trialing one of the new ER/ICU monitoring systems during vendor fair. Arriving soon to LWDH!

In this issue...

**New Equipment
at LWDH**

**Fall & Winter Recap
&
Community Support**

**Upcoming Events
for
Summer 2016**

Equipment Purchases Made Possible by Lifesavers

At last year's Lifesavers Dinner and Auction, we were able to raise a substantial amount of funds to commit to purchasing over \$275,000 in hospital equipment! Here's a look at just some of what you helped us purchase! Thank you everyone who made this night possible!

ICU and ER Central Monitoring Systems

Central patient monitoring systems enable the remote monitoring of many patients at one time through a network. Information is sent to a Central Monitoring Station where vital stats of many patients can be displayed. Patients can be monitored from a central location within the department; however, they can also be monitored by both departments at the same time. This allows for seamless admittance from ER to ICU without loss of important monitoring data during transport as the patient can remain hooked up to the Central Monitoring system. The status of the patient can be constantly monitored and provides the data to assist healthcare providers with diagnostic decisions and therapeutic choices. Data obtained through the central monitoring system can also trigger alarms or alters if a patient's condition changes, prompting the care provider to intervene. This equipment assists in improved health outcomes by alerting staff of critical changes in vitals immediately.



ICU/Surgical Services Manager
Donna Makowsky during the vendor fair with
the new vital signs monitors.

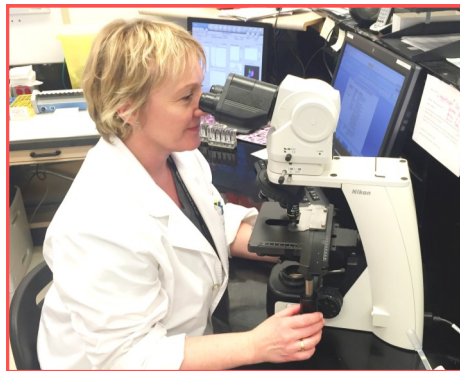
Operating Room Table

The new OR Table will be replacing the existing surgical table, as the current table has been subjected to extended use and no longer has replacement parts available. The new table will improve patient comfort, a safer space for surgeon visibility and improved lift hydraulics which decreases risk for staff injury.

Thanks to the historical night at Lifesavers, LWDH was able to move ahead with this purchase as it had been on the capital wish list for over two years.

Laboratory Microscope

The new microscope replaces the existing microscope which is beyond its useful life and can no longer be repaired. The microscope is in continuous use in the laboratory to study specimens in the aid of diagnosis from infectious diseases to cancer.



Molly, LWDH Medical Laboratory
Technologist seen here examining
specimens.

Massimo Neonatal Monitors

All newborn babies are hooked up to a neonatal monitor within 24 hours of their first breath. It monitors vital signs, including heart rate, blood pressure, and SpO2 (blood oxygen) saturation.

The Massimo can be converted from stationary to handheld which means that monitoring can be done at bedside. Monitoring can be done on even the fussiest or wiggiest of babies accurately. Should monitoring show any abnormal results, it is easier and quicker to get referrals to specialist due to the accuracy of Massimo Neonatal Monitors.



The new neonatal monitors are essential in
monitoring newborn babies at LWDH like
Jaden.



New to Your LWDH

A Meal Delivery with the Douglas'

Seasonal residents, Bryce and Nicki Douglas have long held Lake of the Woods District Hospital close to their hearts. Not only have they made generous annual donations to our general equipment fund, they have helped us check entire items off the Wish List: like the harmonic scalpel, dietary software Meal Metrics and this past fall, the new Meal Delivery System!

The old meal delivery trays were purchased in the 80's and replacement dishware was no longer available. The new system features a completely enclosed thermal compartment protecting everything within it and patients can now enjoy their meals served on china and not old plastic dishware.

This generous purchase by the Douglas' is a great compliment to patient Room Service where patients can order their meals for delivery right off the menu; just like in a restaurant! Room Service would not have been possible without the dietary software purchased by Bryce and Nicki years prior.

LWDH Nutrition and Food Services staff are proud to showcase their delicious "home cooked" meals using the new system. Proper nutrition is such an important part of the recovery and healing process. Thank you Bryce and Nicki for believing in your hospital at the lake and continuing to support and ensure quality patient care.



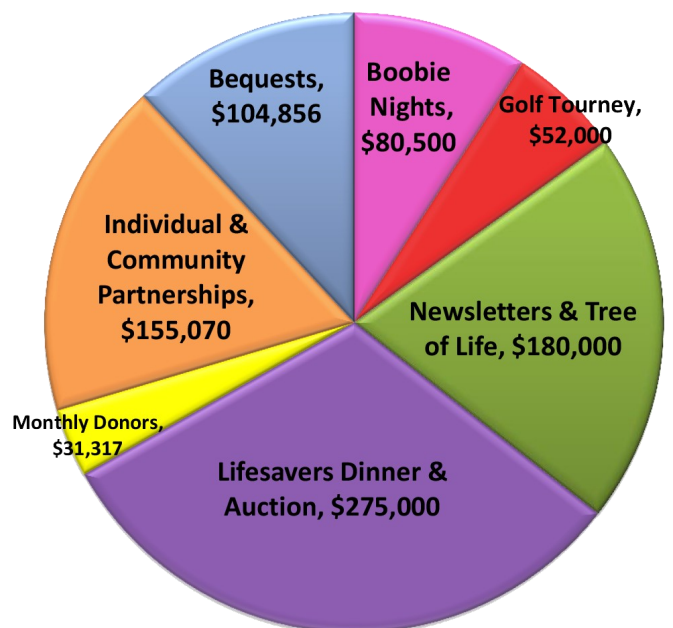
The new meal trays for patients staying at LWDH. Thank you Bryce and Nicki—from LWDH Nutrition and Food Services staff for the new more efficient trays and a refreshing new look for patient meals!



LWDHF 2015-16 Funding Sources

In partnership with your community, LWDHF is dedicated to raising funds solely for new equipment and facility upgrades at LWDH.

The chart to the right shows where our funding came from in 2015-2016; helping LWDHF transfer over \$812,000 to your hospital for medical equipment. Each slice of the pie plays an important role in our mission to help your hospital. It takes an entire community in the "kitchen" to fulfill our mission and help ensure that quality healthcare remains available at Lake of the Woods District Hospital. Thank you for contributing to your piece of the pie! Thank you for helping your hospital help you!



2015-2016 Funding Sources



LWDHF Winter Events Re-cap

The Tree of Life hits \$1 Million for Your Hospital!

Every holiday season for the last 28 years, we light the Tree of Life at LWDH in honour and remembrance of our loved ones. Your care and kindness shines as you truly show us the meaning of giving.

This year, by honouring and remembering your loved ones through \$10 bulbs, you helped us raise over \$51,000. We are proud to announce that the Tree of Life has officially raised over \$1 million for LWDH since its inception in 1987! We did it Alice!

Thank you for continuing this annual Kenora tradition!

Thank you for making a difference, one "bulb" at a time!



Curling for a Cause

Thank you 89.5 the Lake for hosting the Curling for a Cause funspiel over the Winter Carnival weekend! We are excited to share that \$2,168 was raised at this year's funspiel! The money raised from Curling for a Cause was the final amount needed to fully fund the Recumbent Bariatric Chair for the Dialysis Unit at LWDH. The new chair was also funded by the Keewatin Legion Branch #13's Poppy Campaign.

Thank you to the team at 89.5 and to everyone who participated and supported the funspiel!

(L-R) Darell Plummer, 89.5 Station Manager; Jess Rheault, LWDHF Managing Director and Conor Hamill, 89.5 Afternoon Announcer presenting the donation to LWDHF!



KBI Fundraiser—Ladies on the Lake

2015's KBI Ladies on the Lake began with Leanne Wheatstone growing her hair out to donate for wigs; KBI director Cori Libitka loving the idea of tying it into KBI; fellow KBI directors were up for the challenge; 9 ladies and girls signed up to cut their hair; vendors stepped up for the cause and KBI Ladies on the Lake celebrated their inaugural fundraising initiative for LWDHF Designated Fund Forms of Hope by raising over \$6,200! It was such a huge success, that KBI Ladies on the Lake is back for 2016! To take part in 2016, contact KBI today!

Forms of hope was created in 2007 in hopes of making the lives of families and individuals in cancer treatment at Lake of the Woods District Hospital a little easier. \$26,000 was initially raised through an art exhibit called Forms of Hope: the art of the female torso. Local artist Kim Kahoot, in partnership with the nursing staff in the oncology unit administers the Forms of Hope Fund. LWDHF is honoured to have been entrusted with such an important designated fund helping local chemo patients with things such as wigs, travel expenses, medications and help at home.



Volunteers on the stage cutting their hair to be donated into wigs.



Leanne (L) and Cori (R) show off the inches of their cut hair!

To take part in 2016, contact KBI today!
www.kbifishing.com

From Our Generous Community



Bluewave Energy Branch Representative, Kathryn Thome, took the time to apply for an employee designated grant through Parkland Industries Charitable Giving Program in support of LWDHF! The \$400 she received through the program has been designated to LWDH's Chemotherapy Department!

This past fall, LWDHF partnered with **Lake of the Woods Minor Hockey AA/AAA Thistle teams** to run 50/50 during home games! Proceeds from the 50/50 supported both LWDHF and young Thistle Hockey athletes from Atom to Midget! LWDHF's cut of \$3300 purchased a new medical bed! LWDHF was a proud partner! Go Thistles!



Thank you **16th Annual Constable Marv Forsythe Police Officer Memorial Charity Golf Tournament** for supporting your hospital! LWDHF received \$2,200 from funds raised at the Memorial Golf Tournament, designated to the Chemotherapy Department at LWDH.

Scott McEwan (R) and Lori Miles, from the Kinsmen and Kinettes District #2 donated \$460 to LWDHF from hand-crafted wood plaques that were auctioned earlier this fall. They were grateful for the care Lori received during her stay at LWDH, and wanted to give back to the hospital.



The **Kenora Dragon Tamers** made a donation of \$5,000 from their initiatives to purchase new treatment chairs for the Chemotherapy Department at LWDH!

LWDHF was the recipient of a \$10,000 donation from the **Royal Canadian Legion Kenora Branch #12** to go towards enhancing the inventory control system at LWDH with Handheld Bar Coding. Over \$6 million in inventory flows through LWDH each year!



The **Royal Canadian Legion Keewatin Branch #13** awarded \$5,000 in grants to several local organizations from the funds raised from their Poppy Campaign. LWDHF was one of the recipients given \$1,500 to go towards purchasing a bariatric chair for the Dialysis Department at LWDH.

Thank you from all of us at LWDHF and your hospital for choosing to make a difference!

PJP & SMB School Fundraisers



PJP & SMB Elementary Schools hosted events in support of LWDHF! Thank you!

*"We chose the hospital 'cause we want to keep people alive and to support the people that make the world a better place."
- SMB Grade 4 Students*



Dialysis RN Cindy (L) and Dialysis Unit Assistant Sandra (R) with the new bariatric chair at the Dialysis Department at LWDH!

Find us online and on Facebook for more photos and more info! www.lwdhf.com facebook.com/lwdhf



Upcoming Events



Boobie Nights Goes Nuts!

Saturday, June 4th, 2016
 Whitecap Pavilion 7:30pm–1:00am
 Age of Majority



It's the official kick-off to summer! Proceeds from the 2016 event, Boobie Nights Goes Nuts, will benefit LWDHF's initiative to purchase a new CT Scan for the Diagnostic Imaging Department. Be a part of the 7th Annual sell-out summer event in support of your hospital!



Photo courtesy
 KenoraOnline.com

Q-Munity BBQ/Teddy Bear Picnic

Saturday, June 18th, 2016
 Anicinabe Park 11:00am–2:00pm

Join us at Anicinabe Park with the Q-Crew on **Saturday, June 18th!** We have a great day planned for a free BBQ, the Teddy Bear Triage Tent, fun and games, and more!



20th Annual MNP/Hospital Foundation Charity Golf Classic



*See you
 on the
 greens!*

Thursday, July 21st, 2016
 Kenora Golf & Country Club

Team registration opens June 15th. Space is limited!
 If you or your business would like to become a sponsor at this year's Charity Golf Classic, or would like to donate to our silent auction, please contact LWDHF!

11th Annual Lifesavers Dinner & Auction

2016 Title Sponsor Scotiabank®



Save the date for **Saturday, August 6th, 2016** at the Royal Lake of the Woods Yacht Club for the **11th Annual Lifesavers Dinner & Auction!** A formal invitation will be sent out this Spring; however, new guest are always welcome! Please contact LWDHF to make your reservation today! This year's dinner and auction is chaired by Catherine Konantz and her committee of Lisa Paterson, Colin Foster, Leslie Landell and Melanie Sifton-Borger.

We'd like to extend a heartfelt thank you to each of our sponsors for Lifesavers 2016 for your commitment this year. Thank you! See you on the lake this summer!

*There's still time to join our Lighthouse Sponsors for 2016!
 Contact any committee member or LWDHF!*

2016 Lighthouse Sponsors

- The Bryce and Nicki Douglas Family
- Larry and Carolyn Hursh
- Rod and Jeannie Senft and Family
- Sandy and Debbie Riley and Family
- John and Lisa Heimbecker
- Bob and Deirdre Kozminski
- Andrew Paterson and Family
- Jim Gauthier Automotive Group
- David and Ingrid Graves and Family
- Brian and Ruth Hastings

Our Needs are Ongoing

LWDH Equipment Wish List, 2016-17

| | |
|--|-----------|
| CT Scan— <i>Diagnostic Imaging</i> | \$950,000 |
| Patient Ceiling Lifts and Slings | \$70,000 |
| Fetal Monitor— <i>Maternity</i> | \$38,000 |
| Neonatal Resuscitation Beds— <i>Maternity</i> | \$30,000 |
| Glidescope— <i>ER</i> | \$20,000 |
| Rapid Infusion Blood & Fluid Warmer— <i>OR</i> | \$20,000 |
| Wheelchair Scale— <i>Dialysis</i> | \$4,000 |
| Dialysis Chair | \$7,000 |
| Bilirubin Blanket— <i>Maternity</i> | \$6,000 |

LWDHF CT Scan Project

The next big project LWDHF is tackling is the new **CT Scan for the Diagnostic Imaging Department**. The current CT Scan is 11 years old, and replacement parts are no longer manufactured for repairs. This means that should something go down on the current CT Scan and a replacement part cannot be located, CT Scans would no longer be available at your hospital. Over 4,600 scans were performed at LWDH last year. This is an important piece of diagnostic equipment essential to maintaining the quality of care available at LWDH!

The new CT Scan will have improved capabilities including paediatric scanning, improved image quality (160 slice vs current 16 slice -thickness of scan), increased weight capacity and improved radiation doses.

We need your help to keep this essential service and equipment available at your hospital. **100% of your support stays right here to help your hospital.**



The Ontario Ministry of Health and Long Term Care cover on average, 80% of your hospital's operating costs. This limited funding for healthcare increases the financial pressure for your hospital in addition to the fact that none of this funding is designated to cover capital expenses. There is not a matching program from the Ministry to help purchase equipment, which leaves LWDHF to raise the funds needed, dollar for dollar. Your hospital has identified over \$3 million in capital equipment and infrastructure needs over the next 2 years. The list shown on the top is only a small portion of what is needed by your hospital to ensure quality medical care remains available to your community at LWDH.

Who is LWDHF?

The Lake of the Woods District Hospital Foundation was established in 1992 and continues to be the lifeline between your community and your hospital.

LWDHF is governed by an eleven member board which meets monthly, has two full time employees and benefits from over 2,000 volunteer hours per year.

We are dedicated to raising funds for the purchase of medical equipment and capital infrastructure. Since our inception, we have transferred **over \$16.5 million** to Lake of the Woods District Hospital (LWDH) which was initially constructed in 1929, and has received several additions over the years.

LWDHF Board 2015-16

Chair Stephen Lundin, *Partner, Hook, Seller, Lundin*

Vice-Chair Steven Marquis, *Project Manager, Copperfin Credit Union*

Directors

Anthony Sharp, *Operations/Base Manager (Kenora), Ornge Air Ambulance*

Bill Scribilo, *Owner: Century 21 Reynard Real Estate*

Brock Chisholm, *Manager, Rehabilitation Dept., LWDH*

Dominique Kyle, *General Manager, Grace Anne II Yacht & Lodge Director, The Chia Group, Lake of the Woods*

Holly Friesen, *Owner and Artist, HAF Art Studio & Gallery*

Marc Bissonnette, *Account Manager, Acklands Grainger*

There are many ways to give to LWDHF!

Memorial Giving

A memorial gift to LWDHF provides a meaningful way to remember your loved ones. Family and friends have an opportunity to donate towards a lasting tribute set up as a memorial fund. Memorial gifts are recognized on our Donor Board when accumulated donations for the fund reach \$1,000.

Monthly Giving

Did you know that for as little as \$5 per month, you can make a difference in the quality of medical care available at your hospital? **1,000 donors contributing \$25 per month, works out to \$300,000 per year for your hospital!** Imagine the possibilities for your hospital, our patients, and our community!

Planned Giving

Including LWDHF in your will ensures your support for a cause you care about will continue—even after you're gone. By choosing to designate to our endowment fund, your gift continues to give, benefitting your family and our community forever. You can also take comfort in knowing that your gift to LWDHF will lessen the tax burden on your loved ones when transferring your estate.

Please contact LWDHF to discuss your planned giving options such as bequests, gifts of life insurance, RIFs or RRSPs. Final arrangements should be made through your financial advisor.



Why Not Make a Donation Today?
100% of your donation stays within your community!

*We need your help to ensure quality medical care remains available at your hospital.
We encourage you to be a part of investing in a healthy community by making a financial donation to LWDHF today. We can all make a difference, one contribution at a time!*

Printing of this publication is generously provided by the team at Lowerys. Thank you Lowerys!

136 Main St. South • Kenora, ON

Lowerys.com

[we're more than just staples]



1-800-465-3989

Community businesses like Lowerys allow LWDHF to give more back to your hospital. Support your community by shopping at your local businesses!

Thank you for helping your hospital help you!



We'd Love to Hear from You!

21 Sylvan Street West | Kenora, ON | P9N 3W7
T: (807) 468-9861 x2419 | F: (807) 468-6051
lwdhf@lwdh.on.ca | www.lwdhf.com

Contact **Jess Rheault**,
Managing Director, with
any inquiries about
donations, events or
volunteering!

