



Lake of the Woods District Hospital Foundation

www.lwdhf.com



ANNUAL IMPACT REPORT

2023/2024

Donor funding is imperative to all aspects of patient care. The Ministry of Health funds staff salaries and day-to-day operational costs, but community support covers the rest. Thanks to donor support, we're transforming care close to home.

LAKE OF THE WOODS DISTRICT HOSPITAL

SUPPORTING PATIENTS AND FAMILIES ALONG THEIR HEALTHCARE JOURNEY.



Lake of the Woods District Hospital (LWDH) is an acute care hospital located in Kenora, Ontario. We serve a catchment population of 32,000 people for primary care, 90,000 people for secondary specialists care, spread over a vast geography, including 10 First Nation communities and a large seasonal population. The LWDH Emergency Department provides 24-hour care for persons requiring urgent care. Beyond numerous outpatient services, LWDH supports a busy visiting specialist program and community Mental Health & Addictions programming.

BY THE NUMBERS: 2023-2024



75

Patient beds



21,166

Emergency visits



916,407

Laboratory procedures



2,504

Operations performed



10,302

Physiotherapy attendances



2,841

Chemotherapy treatments/visits

LWDH IS:



Kenora's largest employer

- 340 Full-time staff
- 96 Part-time staff
- 194 Casual staff

A vital facility for 24-hour air ambulance & medical transport services provided by Ornge.



- 2 hours east of Winnipeg
- 5 hours west of Thunder Bay

THE COLLECTIVE IMPACT OF DONOR SUPPORT IS TRANSFORMING CARE CLOSE TO HOME



The Lake of the Woods District Hospital Foundation (LWHDF) is dedicated to fundraising in partnership with our community to meet the medical equipment and facility needs of Lake of the Woods District Hospital (LWDH). Our goal is to inspire community giving at all levels to improve healthcare outcomes for the people of Kenora District and beyond.

April 1, 2023 - March 31, 2024



3,140

donations received



1,063

donors



1,100 volunteer hours

\$1.47M

transferred to our hospital this year!

Since 1993



\$25M

Raised for new equipment at LWDH



MESSAGE FROM OUR LEADERS

COMMUNITY DONATIONS FUND 90% OF NEW CAPITAL MEDICAL EQUIPMENT AT LWDH

The success of our community hospital is because of you! Critical acquisitions including capital medical equipment and technology are not covered by government funding. Funding for capital equipment and technology (IV pumps, ultrasounds, hospital beds cardiac monitors) relies on donations from the community.



This past year has been a powerful testament to your support of outstanding healthcare for Kenora District. Because of the extraordinary generosity of our community, our team has been able to purchase the newest technology for Surgical Services and upgrades for the newly renovated Emergency Department. Donor support is making a tangible difference and helping to ensure we are equipped to provide better, faster diagnosis, close to home.

The generosity we've seen from 1,065 donors and 800 volunteer hours has been truly inspiring. Notable relationships and major gifts include a \$500,000 commitment from the FDC Foundation to invest in substantial laboratory upgrades and innovations, as well as two significant Legacy Gifts from Benny Oakley and Gordon Smith. Leaving a planned gift is a deeply personal decision that is an expression of a person's values, and we want to take a moment to recognize Benny and Gord for ensuring the hospital is equipped to care for our rapidly growing community for years to come.

Our supporters rallied in a way that always brings us back to the idea that healthcare isn't just about the best equipment and technology. Rural healthcare is people helping people; investing in equipping our team. In turn, our healthcare team works to improve the lives of those that come to LWDH.

Here are a few stories of how this equipment is helping to save lives, improve the patient experience, and advance both efficiency and safety.

Because of your support, we are able to provide extraordinary care for all patients who call Lake of the Woods home.

In gratitude,

Kimberly Mejia
Chair, Board of Directors
LWDH Foundation

Mira Trebilcock
Executive Director
LWDH Foundation



LEAVING A LEGACY

Sometimes called planned giving, this deeply meaningful way of giving enables donors to make a gift in the future, while planning what kind of legacy they want to leave to their loved ones and the causes closest to their hearts today. Benny Oakley and Gordon Smith chose to leave a Legacy Gift to the LWDH Foundation to create a healthier future for our community - while creating a legacy of care for generations to come.

BENNY OAKLEY

For some people, acts of kindness, however small, are an everyday part of their lives. Kenora resident Benny Oakley was one of those people. Neighbour's described him as small in stature, but with "the biggest heart".

Originally from Rosedale Manitoba, Benny was born on May 23rd, 1918. Benny was a locomotive engineer for the Canadian Pacific Railway until his retirement. He lived until he was 103, passing away on July 3, 2020. A lifelong walker, he could often be seen at the Kenora waterfront and other outdoor venues. He was known for his easy willingness to help friends, family and those in need.

Benny's generosity extended to his legacy gift to the Lake of the Woods District Hospital Foundation. In his final wishes, Benny continued to think of others. He bequeathed more than \$315,000 to the the Lake of the Woods District Hospital Foundation (LWDHF). Benny wanted to improve the lives of others by supporting health care at home.

GORDON SMITH

Born in Dryden, Gordon moved to Kenora early in life and worked at his family's store, Smith's Grocery, eventually taking it over. He was a well known businessman with a variety of side jobs, including delivering chips and candy. Giving back was always engrained in Gord's life; sponsoring sports teams over the years and even driving the school bus later on. His favorite pastime was carving and he was a proud member of the Lake of the Woods Carving Club.

Later in life, Gordon experienced a major health challenge when he was diagnosed with cancer. The health care professionals at LWDH provided excellent care while his family and friends were at his side. After recovering from cancer, Gordon unexpectedly had cardiac issues.

Gordon's legacy is one of a life fully lived and cherished time spent with family and friends. Gordon's final wish to enhance patient care at home will have a lasting impact on health care in our community for years to come. Half of Gord's bequest was directed to support current capital medical equipment needs during the 2023-24 year, and half are invested in support of critical upgrades in Diagnostic Imaging planned in coming years.



PAR 3 CHARITY CHALLENGE DRIVEN BY THE DINGWALL GROUP

A PAR-FECT DAY RAISES OVER \$200,000 FOR YOUR EMERGENCY DEPARTMENT



The 3rd Annual Par 3 Charity Challenge, driven by the Dingwall Group took place on July 13, 2023 and reached new heights! Thanks to the tremendous support of 144 golfers, 65 sponsors, nearly 90 volunteers, and 200 people who purchased balls for the Golf Ball Drop, the tournament raised an unprecedented \$200,514 to purchase 15 new stretchers in the Emergency Department at LWDH.

The day kicked off with Kenora's first ever Golf Ball Drop, where 500 pre-sold numbered golf balls were dropped from Jarnel Contracting's crane, hoisted 15ft above the 18th hole. The six Presenting Sponsors of this year's tournament; The Standard Insurance, Kenora Chiefs Advisory, Jarnel Contracting, Sierra Construction, Princecraft Boats, and Prairie Toyota Dealers, and 14 Platinum Sponsors, set the tone for the day. The collective effort of the event sponsors and volunteers – 45 of these volunteers being hospital staff - helped to make the day a resounding success! The tremendous involvement of our community and its' spirit of philanthropy was palpable throughout the day!

This cornerstone event plays a pivotal role in making great care possible, close to home and would not be possible without the passion and commitment of a dedicated group of volunteer organizers lead by Laci Dingwall and Shauna Aubin. To all those who were involved throughout the day - thank you!

YOUR IMPACT: 15 new stretchers and mattresses for the Emergency Room!



Built in-lift assists!

LIFESAVERS DINNER & AUCTION

NAUTICAL NIGHT TO REMEMBER

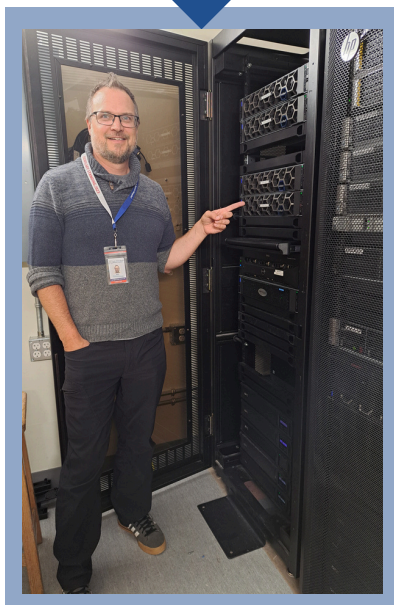
Over its 18-year history, the Lifesavers Dinner & Auction has raised over \$3.5 million for the Lake of the Woods District Hospital (LWDH), making it the largest annual fundraiser and ensuring the support of top-notch medical care through the investment in equipment and technology.

The 2023 Lifesavers Dinner and Auction on August 12th, was no exception, raising an unprecedented \$429,804. We would not be able to achieve a fundraising feat of this magnitude without the incredible leadership of Lisa Paterson and Aynsley Cockshott, along with the Lifesavers Committee; Dr. Catherine Murray, Kate Paterson, Katie Hall Hursh, Marla Klassen and Nicki Douglas. This resounding success is namely due to the generous support of 30 Lighthouse Families, three Lifeboat table sponsors, a dozen Anchor donors, the attendees and the countless individuals and organizations who provided live and silent auction prizes including the “whistle raffle” prize of a Manta5 Hydro Foil Bike generously donated by WSL Sport & Leisure and Tall Pines Marina. Proceeds from the 2023 event funded the following medical equipment:



EQUIPMENT

- **10 Vital Signs Monitors** - 3E Medical/Surgical
- **Stress Test Machine** – Diagnostic Imaging
- **2 x LifePak15 Defibrillators** – Emergency Dept.
- **TruMonitor ECG Simulator** – Education
- **1 MediDispense Unit** – Maternity
- **1 MediDispense Unit** - Emergency Dept.



TECHNOLOGY

Wifi Enhancement:

39 new Wifi access points installed throughout the LWDH, ensure connectivity for all technologies, in every part of the building. These enhancements support care as well as, business and administration operations throughout LWDH.

Major Core Server Infrastructure Update

The pandemic forced the healthcare sector to accelerate its digital transformation. In order to support the mass shift to digital healthcare, updating the major core service infrastructure ensures more space and reliability. All areas of the hospital depend on these technologies for daily operations: Diagnostic Imaging, Rehabilitation, Pharmacy, the ER, Health Records and more. Ben Pawlowski, Director of Information Systems, showcases the new VxRail System server boxes running in a cooled, secure room.



SMALL TOWN BIG HEARTS

THAT'S CAUSE FOR CELEBRATION

A total of **\$32,715** was raised by the community through various community hosted events. Here are a few highlights:

LIFT THEM UP

On October 7, 2023 CrossFit Core KTown hosted the 2nd annual *Lift Them Up* event. Over 35 members from our local fitness community gathered to throw some weight overhead in support of new patient beds & mattresses at LWDH.

FORE YOUR HOSPITAL

The fairways were busy in summer 2023, leading to fundraising for the new equipment at LWDH! We want to extend a huge thanks to the hosts and participants of:

- The 2nd Annual Ladies Open Tournament in memory of Anchilla McDonald
- 4th Annual LOTW Family & Friends Golf Scramble, hosted by Paige Stevenson & Ava Decock
- The 22nd OPP Cst. Marv Forsythe Memorial Tournament, hosted by Dennis O'Sullivan & family



WHEELHOUSE ON THE WATER

Wheelhouse Cycle Club Winnipeg brought the magic of the Vault to LOTW during August-long 2023. The unique pop-up event was sold out in just hours and riders had the opportunity to take in a ride on LOTW while supporting the wellbeing of our greater community! We owe a ton of gratitude to the Heimbecker's for hosting, the Motivator's for leading, and the community for the energized rides!

GIFTS OF GRATITUDE



PATIENTS SHARE THEIR THANKS FOR THE CARE AT LWDH

When newborn baby Rylee Haw was born three weeks early, she experienced respiratory distress. New parents, Jess Ricklefs and Nick Haw, were very concerned. Rylee seemed to get better, but after 12 hours, she was once again having difficulties breathing. That's when LWDH Respiratory Therapist, Chelsea Campbell stepped in. With her expertise and training, Chelsea quickly ensured Rylee had the necessary medications, resources and tests required.

Jess and Nick greatly appreciated Chelsea's support, knowledge and quick action. She explained treatment and medical terms in common language so they could understand what was happening. She had a calming presence and continuously checked and monitored Rylee's progress until she was transported to the NICU in Winnipeg Hospital.

"Chelsea came in like a Superhero...she was kind, caring, empathetic and professional. We will never forget her and we are so thankful to her. Thank you Chelsea!"

Jess shared that they were grateful for the new bassinets and monitors in the Obstetrics Unit, all of which were funded by generous community donations. Jess added that even small donations are important to health care excellence: ***"You don't need it [healthcare equipment] until you do -- and then you will be thankful it's there!"***

Jess reports that Rylee is a happy and healthy two-year-old now, thanks to the excellent care of LWDH staff like Chelsea. Chelsea Campbell received her Compass Lanyard pin from unit manager Paula Peacock. Congratulations and thank you Chelsea!



SAY "THANK YOU" BY INVESTING IN PATIENT CARE

Patients and their families often want to express how thankful they are for the care they, or a loved one, received at LWDH. When words aren't enough, a Gift of Gratitude can provide a special "thank you". Any individual can make a donation in honour of a physician, nurse, staff member or volunteer. The honouree(s) will be notified of the special tribute gift and provided with the note of appreciation along with an exclusive Gifts of Gratitude compass lanyard pin as a physical reminder of the critical role they played in someone's healthcare journey. The amount of the gift will be kept confidential.



COMFORT CLUB

ENSURING A HEALING ENVIRONMENT

For some, being a hospital patient can be an overwhelming experience. The COVID 19 pandemic disrupted the strategic procurement of equipment at LWDH over the last three years. Annual replacement purchases like beds were put on hold to invest in the much-needed ventilators, negative pressure rooms and PPE. As such, LWDH found itself in a unique position in 2023, needing to replace 12 beds and mattresses (in addition to 15 stretchers in the ED) throughout the hospital that were beyond lifespan and unsafe to use. This area of great need led to an initiative called the Comfort Club Appeal. Thank you to all the donors who responded to the appeal and helped us meet our goal.

COMFORT CLUB DONORS

Becky Hailstone	Kaye Balajadia & Peter
Canadian Online Giving	Guanzen
Foundation	Mark Cudney
CrossFit Core KTown	Marlene & Robert Gordon
Delos & Ella Nyberg	Micaela McIsaac
Elite Intellicare Staffing LTD	Michael & Cheryl O'Flaherty
Eric and Carol Johnson	Brent & Penny Goodz
Fund	Dalton Yeomans
The Estate of Gordon Smith	Novak MacDonald Fund
Ferg & Kathy Devins	Patricia MacPherson
Gary & Carolyn Bachman	Talbot Family Foundation
Family Fund	United Way of Thunder Bay
Grant & Shannon Johnson	Wynne DeGagne
James & Janice Tennant	Zelda Romstedt

We are grateful to the individuals, organizations and foundations for giving comfort to those patients who need it most.

UPGRADED TRANSPORT CHAIRS



Thanks to the John Andrews Foundation LWDH was also able to invest in 6 new Patient Transport Chairs.

PRIDE IN PURCHASING

Modern equipment is a key part of today's health care and your generous donations allow the hospital to acquire the advanced tools needed to improve care and save lives. Your donations significantly impacted the care that is provided at the Lake of the Woods District Hospital.

MORE EQUIPMENT THAT YOU HELPED FUND!

Organized by department, the list below includes all the equipment purchases not previously mentioned, made possible through donations in 2023-2024. **Thank you!**

Lab

- Ultracentrifuge
- Motorized Microtome
- Tissue Embedding Console
- Micro Automated Slide Stainer
- Televue Smart Glasses
- Histology Tissue Processor & Reno
- PCR Analyzer
- 8 PCR GeneXpert Test Modules
- EPOC Readers, Hosts, Printers
- Torrent Automatic Extinguisher

3E/ICU

- 18 Overbed Table & Bedside Tables

Diagnostic Imaging

- CT Software Upgrade for Prime V.8

Education

High-Fidelity Simulation Manikins:

- SimJunior (Pediatric model)
- SimMom (Birthing mom & baby)
- MegaCode Kelly

Emergency Department

- Metro Lifeline crash Cart
- Mobile Suture Cart
- A-Cart Organizational System

Maternity

- Sleep Chairs with Padded Arms
- Avalon CL Transducer
- Gyne Stretcher
- 5 Bassinets

Pharmacy

- Table Top Packager
- Medical Freezer

Surgical Services

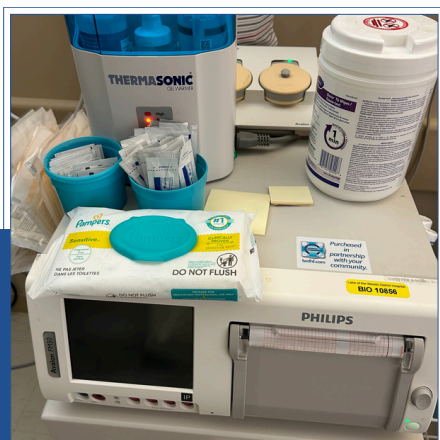
- Accutome A-Scan Plus Connect
- Spine Fusion Power Console
- 4 Lead Aprons & Hangers
- Semi Rigid Uretero-Renoscope
- Single Chamber Warming Cabinet - Urology Fluids

Rehab/Patient Services

- Recumbent Bike

Laundry

- 90lb Washer
- 120lb Dryer



LEARNING & INNOVATION

Innovation and problem solving are rooted in ongoing education and learning opportunities. Investing in our teams' education is an investment in their professional and personal growth, and has a positive outcome on patient experiences.

FOSTERING A CULTURE OF EXCELLENCE

Rural hospitals are challenged to keep their practitioners' skills fresh and up-to-date, especially around the area of acute care. Regular practice of critical care skills also reduces adverse patient events due to errors. During simulation with high-fidelity simulation manikins, learners (physicians, health care professionals and students) can practice their skills in a realistic, safe and controlled setting — one that eliminates the risk to human life.

Throughout the past year, the LWDH Foundation was able to help LWDH invest in three new advanced high-fidelity manikins thanks to the generosity of two separate gifts.

Mike and Mona's \$100,000 donation in memory of Michael Dufresne funded two new advanced high-fidelity patient simulators; an obstetric manikin and a pediatric manikin. Various features of the new manikins were tailored (skin tone and gender) to reflect the diversity of communities served in northwestern Ontario.

Additionally, RBC Foundation's generous \$20,000 gift supported the acquisition of a new MegaCode Kelly, an advanced life support manikin. "From advanced airway management to intricate IV

therapy techniques, MegaCode Kelly has been instrumental in equipping our healthcare professionals with the skills they need to save lives effectively," said Jennifer Young, Clinical Educator at LWDH.

Dr. Sean Moore, Chief of Staff at LWDH explains, "The simulators give learners the opportunity to enhance and practice their skills prior to treating patients in high-stress situations. We teach ways of communicating more effectively, teamwork and situational awareness to mitigate human errors. We also need to acknowledge that medical learning environments have too long been fraught with bias and patriarchal undertones. NOSM University has a foundation of social accountability and LWDH shares the approach of anti-racism and a commitment to close health gaps and help promote equitable care."

Each of these manikin's replaces 20-year old technology. The long-term impact on healthcare education, patient outcomes, and the overall healthcare system is an investment that will continue to give for years to come while, honouring the legacy of Michael Dufresne, an incredible teacher and developer of talent within our community.



MONTHLY GIVING



SMALL GIFTS. BIG IMPACT.

Our Monthly Giving Club is a growing group of compassionate individuals who are providing steady, ongoing funds to LWDH Foundation. These small monthly gifts help us prepare for the unexpected. Together, this community helps equip the hospital with the best tools to diagnose and treat patients. Monthly gifts allow us to plan and allocate resources where they are needed most while also allowing our donors to choose the level of support that works best for them. In 2023-24, monthly donations ranged from \$10 to over \$417. Our 68 monthly donors members raised \$17,578. Our goal is to continue building momentum with this group and to increase awareness around the benefits of providing consistent and reliable funding.



LWDH EMPLOYEE GIVING "I GIVE"

Employee Giving Club – Monthly gifts from staff help fund vital medical equipment and technology....for staff.

Our Employee Giving Club has grown to 134 compassionate LWDH employees who give by caring for our patients and by investing in their hospital. This group raised \$23,891 towards equipment purchases this past year. Thank you for helping transform care for our community!

"I was born in this hospital and our three sons were born in this hospital too. I've worked 2/3 of my life here. I have seen many changes and the need for advancements in our diagnostic equipment over the years. It is important as our only hospital in the community to have the most current equipment to give residents the best resources for great care that we all deserve."

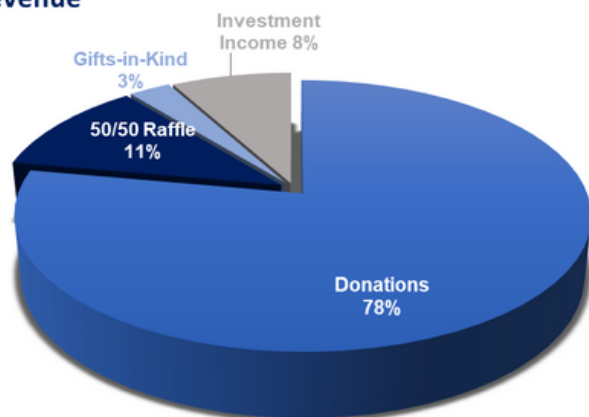
-Peggy Holland, RN - Maternity



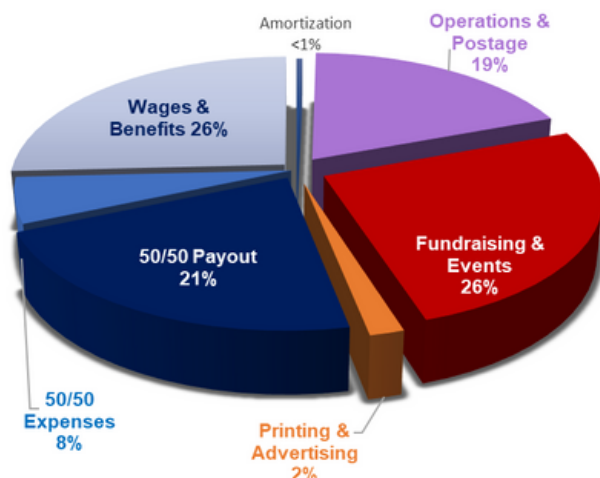
YOUR GIFTS MAKE CARE BETTER

Financial Summary

Revenue



Expenses



\$1.5 million generated for equipment & technology at LWDH

Thank you to the 1,063 donors who made 3,140 donations from April 1, 2023 through to March 31, 2024. Individuals, families, foundations, municipalities, and businesses all came together last year to raise nearly \$3M, of which \$1.5 million was invested in current medical equipment needs at LWDH. An additional \$600,000 is invested for major diagnostic imaging upgrades in coming years to continue transforming care, close to home.

The LWDH Foundation is committed to ensuring every gift received is stewarded with the utmost care and integrity. It is with this in mind that we are always looking to improve both the costs to raise a dollar and return on investment ratios, in keeping with industry benchmarks.

Please visit www.lwdhf.com/report to view our audited financial statements or contact the Foundation Office at 807-468-9861 x2469.

2023-2024 LWDH FOUNDATION BOARD OF DIRECTORS

We thank the following individuals for their commitment to healthcare excellence at LWDH.

Kimberly Mejia

Chair

Melanie Buffett

Vice-Chair

Jackie Hailstone

Secretary/Treasurer

Anthony Sharp

Past -Chair

Directors

Shauna Aubin

Marc Bissonette

Laci Dingwall

Dr. Stephane Foidart

Ashley Hendy

Barry Marmus

Colleen Neil



ANNUAL DONOR LISTING

David Abal
Jasmine Abick
Jerry Acheson
Wayne & Millie Acheson
Ashlyn Adams
Donna Adams
Eugene & Yvonne Ahlstrom
Crystal Alcock
Shirley Alcock
Susan Alexiuk
Melany Almosara
Dennis Alvestad
Michael Alvestad
Walter & Connie Alward
Lance & Jeanne Anderson
Anonymous (6)
Brian & Leslie Apland
Ma Cristina Arellano
Les & Gillian Armstrong
Mabel Armstrong
Gail Asper
Leonard & Susan Asper
Ruth Asper
Tamara Attanasio
Shauna & Gerald Aubin
Margaret Avery
Sheryl Bailey
Judy Bain
Carla Baird
Byron Baker
Dianne Baker
John M. & Catherine Baker
Megan Baker
Kaye Balajadia & Peter
Guanzen
Barry & Bonnie Baltessen
Peter & Edeltraut Barber
Dale Bartlett
Dennis Battigelli
David & Pam Baxter
Miranda Beare
Blair & Melissa Beasant
Bob Beasant
Donny & Rhoda Beasant
Judy Beckworth
Doreen Belair
Randy & Katrina Belair
Joan Belanger
Lily Bell
Gary Ben
Kris & Shirley Benidickson
Bruce & Kathy Bennett
Lynn Bergman
Marlene Bergman
Bob & Cathy Berriault
Bruce & Joyce Berry
Brian Bertrand
Dr. James & Geri Beveridge

Julia Beveridge
Treena Bingham
Vicki Bingham
Larry & Marjorie Birch
Marc Bissonette & Lana
Goodman
Louis Bissonnette
Robert & Sandra Blake
Sandra Bland
Judy Boatman
Garry & Shirley Bolton
Robert & Eleanor Bond
Esmelen Bonifacio
Henry Borden
Christine Borger
Jim Borger
Carol Boucha
Char Boucha
Olivia Boucha
Melody Boucher
Heather Bourne
Cassandra Boutwell
Myron & Louise Bowen
Ryan & Nicole Bowen
Betty Bowie
Ruth Bowiec
Charlene Branch
Patrick & Pamela Brett
Paul & Margaret Brett
Ellen & Martin Brodigan
Don & Valerie Brown
Elaine Brown
Joanne Brown
Jesslyn Bruyere
John and Jeni Bryngelson
Jennifer Buchanan
Abbiegail Buckle
Dee Buckle
Melanie Buffett
Susan & Matthew Bugress
Chad Buist
Brock Bulbuck
Mark & Carilyn Buller
Erica Burgess
Phil & Pat Burke
Carol Burns
Kayla Cabate
Jack Cadieux
Dr. Fahad Cadili
Don Cain & Angela Fediuk
Maureen Calungsod
Donald Cameron
John & Candice Cameron
Nancy Cameron
Chris Canfield
Estelle Cantera
Shirley Carbert
Jennifer Carey

Dolores Carlson
Dean Carrie & Carol Wilson
Kelly Carver
Noveth Caylan
Dale & Martha Cederwall
Gale Cederwall
Matthew & Stella Cederwall
Ed & Pam Chagnon
Kenneth J. Chambers
Alison Charlebois
Dorothy Chase
Brian Chipman
Steve & Ruth Chipman
Kevin Chipman & Bradley
Zander
Tod Chipman
Brock & Leanne Chisholm
Celia Christensen
Kristine Cisyk
Linda Clarke
Ariel Cobiness-Brittian
Grant & Aynsley Cockshott
Angela Coffell
Corrine Coffey
Allen & Gloria Colfer
Sylvia and Paul Coma Bell
James Cook
Laurie Copeland
Rodney Corbett
Claudine Cordeiro
Gary & Susan Cormack
Earl & Vicky Cory
Judith Cottam
Bailey Coulis
Susan Coulis
Elizabeth Courtney
Christopher Coward
Meribeth Coyne
Haylee Creed
Janyce Creery
John Crerar
Joanne Crook
Mark Cudney
D'Arcy & Wendy Cuthbert
Susan Cutler
Rick & Lise Cyncora
J. Edward & Margaret Czaja
Keith & Carol Dafcik
John & Judy Dahl
Bruce & Val Daly
Carol Davis
Ken & Donna Davis
Sharlene Davis
Amanda Dawe
Andrea Day
Samantha De Bigio
Hazel De Los Santos
Christopher Decock

Kathryn DeGagne
Wynne DeGagne
Julieta Dela Cruz
Linda Delamere
Katherine Delorme
Renee DeMeyer Mesman
Bobbi Derkson
Sharon Derouard
Mary DeSousa
Gilbert & Wanda Desroches
Maribel Destura
Clark Devins
Ferg & Kathy Devins
William & Faye Devins
Carla Devlin-Scott
Catherine Dewar
Ian Ross Dewar
Assunta Dewson
Robert & Mary-Pat Dickson
Bill & Kim Dingwall
Cam & Laci Dingwall
Mike & Beth Dingwall
Kendra Dobinson
Lisa Doerksen
Deanne Dolk
Jaca Domogcao
Mary Ann Donnelly-Favreau
Andrea Doucette
B.C. Douglas
Bryce & Nicki Douglas
Julie Douglas
Ken & Jackie Douglas
Terry Douglas
Cristina Doyle
Dr. Emily Drake
Madeleine Dreger
Donna Dryden
Antoinette Dufresne
Doug & Eva Dufresne
Mark & Stephanie Dufresne
John Duggan
Mark & Donna Duggan
Patrick Duggan
Terry & Norann Dunbar
Bradley Edie
Rob & Patti Edie
Olive Anne Edison
Garry Edlund
Wendy & Wray Edwards
Sylvia Ellis
Murray & Judy English
Carole & Dave Engstrom
Karen Essery
The Estate of Gordon Smith
Ashleigh Everett & Stuart
Murray
Amy Fadden
Jacques & Paulette Fafard

The Annual Donor List is based on generous gifts received between April 1, 2023 through March 31, 2024.

Ronna Fafard	Daniel & Cheryl Graham	Dorothy Holmgren	Irene Kember
Patricia Fair	Doug & Irene Graham	Jutta Holmstrom	Paul Kennedy
Debbie Fairfield	H. David & Ingrid Graves	James T. & Margaret Hook	Tim Keogan
Sue Farrah	Gerry Green	Richard & Lori Hoppe	Jodi Kerr
Arthur & Jen Fast	Lorne & Gloria Greenwood	Sandra Horbaty	Carol Kilpatrick
Alex & Evelyn Faulds	Garth & Cali Grieder	Dennis J. & Sandra Hosfield	Blain King
Barb Favreau	Caitlin Griffith	Daniel Hoshwa	Gloria King
Michelle Favreau	Rhonda Grist	Isabelle Houghton	William King
Diana Fawcett	Barry & Carol Grosset	Sue Hovi	Janet Kipkie
Donald & Gladys Fedus	Glen & Sue Gummeson	Jay Hrominchuk & Rikki	Peter G. Kirby
Liljia Felicia	Vicky Gustafson	Lampshire	Charlene Kissick
Signy Felicia	Walter Gustafson	Norman Hubley	Bruce Klassen & Karen Dunlop
Bella Fernly-Whittingstall	Dick & Candi Haas	Irene Hudson	Henry Klassen
Cathrine Filmon	Edward Habermehl	Donna Hughes	Kevin & Deneen Klippenstein
Marion Fish	Reg Hagar	Jacqueline & Laurin	Jennifer Knutson
Dr. Stephane & Kailee Foidart	Laraine Hager	Hummelbrunner	Kyle Koch
John & Colleen Ford	Becky Hailstone	Dan & Katie Hursh	Kelly Kolisnik
Denise Forsyth	Sean & Jackie Hailstone	Larry & Carolyn Hursh	Don & Catherine Konantz
Ann Foster	Cathy Hall	Sylvia Husack	Gordon Konantz
Cathy Foster	Lindsay Hall	Marian and Blair Hutchings	Tyson Koop
Peter & Lesley Fox	Mary Hall	Jeff Hynes	Pat Kornas
Terry Fraser	Roseann Haller	Erika Ingebrigstson	Maria Kortchevitch
William Fraser	Colleen Halverson	Karen Ingebrigstson	Maureen Kortz
Robin Frieling	Esther Halverson	Ken Ingo	Isabel Kowalik
Ramona Fullmer	Dr. Ken Hamin	Diane Iriam	Judith Kowalik
Steven Funk	Kendra Hamin	Kasha Iriam	Dr. Dean Kozak
Marcel & Joanne Gaborieau	Lisa Handley	Krystianna Isfeld	Gestur & Elizabeth Kristjansson
Brian Gan	Bree Haney	Liam Isfeld	Dr. Joel Kroeker & Holly Ann
Richard & Debbie Gan	Carolyn Hansen	Paul Jackson	Friesen
Colleen Garrow	Diana Hanstead	Violet Jackson	Judith Krumbacher
Eva Garrow	Haroldene Hanstead	Bella Jandumon	Lesley Kuna
Liz Garrow	Mitchell Hanstead	Alice Jardine	Carol Kurtz
Rene & Linda Garrow	John Harbottle	Camilla Jardine	Larry Kurtz
Tiffany Garrow	Peter & Ruth Harland	Jordan Jardine	Richard Kurtz
Wendy Gatrell	Zevi Harris	Jennifer Jarvis	Dr. Brad & Kristen Kyle
Wayne Gauld	Wilma Harrison	Melissa Jean	Dr. David & Dominique Kyle
Stephanie Gauthier	Doug & Jan Shute Harvey	Nancy Johanson	Dr. William & Eleanor Kyle
Kelsey Geisel	Brian & Ruth Hastings	Carolyn Johnson	Frank & Darlene La Belle
Pam Genaille	Janice Hatfield	Dela Rae Johnson	George Laco
Walter & Evelyn Genereux	Charmaine Hay	Derek Johnson	Christine Lacy
Ken & Sheila George	Diane & Randy Heida	Grant & Shannon Johnson	Georgina Laffin
Roberta Giasson	Ann Height	Janice Johnson	Lori Laffin
John & Barbara Gibson	John & Lisa Heimbecker	Kevin Johnson	Ruth Laidlaw
Chris & Diane Giles	Cliff Heino	Paul Johnson	Gerald & Shirley Lajeunesse
Daniel Girard	Tyler Helsel	Susanne Johnson	Wendy Lajeunesse
Moe & Ruth Girard	Monique Henderson	Reagan Johnston	Lowell Laluk
Chris Godin	John Hendy	Ethan Jones	Jordyn Lambert
Henry & Laurine Goerzen	Nancy Hendy	Norman & Colleen Jones	Joan Lamoureux
Guy & Lou Goodwin	Melvin & Katharine Henton	Grace Jorgensen	Carolyn Lampshire†
Brent & Penny Goodz	Paul & Carol Hill	Shirley Jorgenson	Nadine Langelaar
Donald Gordon	Chris & Pamela Hodgson	Jennifer Jurgens	Garry & Diane Lapworth
Heather Gordon	Lynne Hoegi	Kathy Kaeming	Angela Larman
Holly Gordon	Doreen Holland	Addyson Kasprick	Hugh D. & Jane Latter
Margaret Gordon	Peggy Holland	Catherine & Gerald Kasprick	Nora B. Lavoie
Robert & Marlene Gordon	Lesley Hollis	Edward Kasprick	Sean Lawton
Pam Gorrell	Paige Hollis	Sean Kavanagh	Rosa & Nello Le Donne
Bill & Cheryl Gow	Irene Hollowell	Kathleen Kearney	Donalda Leckie
Averie Grafham	Trevor & Valerie Holm	Robert Keith	Bonnie Lengyel
			Arlene Lentz

† denotes deceased



Evelyn Lentz
 Marlene Leroux
 Lyle Letain
 Elliot Leven
 Valerie Lillico
 Kathryn Limerick
 Donna Lin
 Barb Lindquist
 Margaret Lindquist
 Janet Lindstrom
 Michael & Mona Linton
 Rosalind Livingston
 Scott & Betsy Lockhart
 Dan Loewen
 Amanda Longe
 Pexie Loreto
 Brock & Louise Love
 Hannah Love
 Joanne & Rick Love
 Victor & Judy Lund
 Barbara Lundy
 Brent Lundy
 Tania Lysak
 Jennie MacDonald
 Judy MacDonell
 Darlene MacGillivray
 Vita Macins
 Dale MacKenzie
 Dave MacLennan
 Bruce MacNeill
 Patricia MacPherson
 Robert Madden
 Gordon Makowsky
 David & Rosemary Malaher
 Darci Mann
 Lillian Marchant
 Craig & JoAnn Marek
 Dane Marek
 Barry & Wendy Marmus
 Steven & Jennifer Marquis
 Reghan Marsh
 Angela Martin
 Kelly Martin
 Lorne & Bonnie Mazur
 Bonnie McArthur
 Lynn McAughey
 Janice McCarty
 Gord & Amanda McCool
 Gordon & Lynne McCoy
 Paul & Lynne McCrea
 Darlene McCutcheon
 Drs. McDermid & McKenzie
 Jessica McDonald
 Larry McDonald
 Don & Beverley McDougald
 Pat McDougald
 Kelly McDougall
 Alexis McGinnis
 Elizabeth McGogy
 Linda McInnes
 Sydney McInnis
 Susan McIntosh
 J. Malcolm McIntyre

Micaela McIsaac
 Janis McKeag
 Kathleen McLean
 Rose McMahan
 Ardythe McMaster
 George & Fran McMillan
 Glenda & Malcolm McMillan
 Ester McMillian
 Laine McMillian
 Joanne McMillin
 Pat & Lee Meagher
 Jordan Mejia
 Kim & Brooks Mejia
 Eric Melillo
 Jodi Melillo
 Damon & Carol Merredew
 Shawn Metail
 Susie Miclash
 Robert Miles
 Elizabeth Millar
 Trudy Millar
 Wilma Miller
 Jamie & Sarah Minor
 Al & Judy Minor
 Art Mior
 Linda Mitchell
 Dave Moll
 Merilee Mollard
 Margaret Moncrief†
 John & Dorothy Monteith
 Dylan Moon
 Michael & Jane Moore
 Dr. Sean & Fay-Lynn Moore
 Marie Morden
 Haelee Morgan
 Ethel Morgan-Reynard
 Allan & Mary Morris
 Peter & Sharon Morris
 Bertha Morton
 John & Bonnie Morton
 Thomas & Cheryl Mosindy
 Terry & Susan Moss
 Jeffrey Mostow
 Pat Mulash
 Kathleen Mullen
 Alan Mundy
 Tracy Munn
 Dr. Catherine Murray & Matthew Johnson
 Dr. Ken & Judy Murray
 Eric Myles
 Kaitlin Myles
 Seth Mymryk
 Colleen Neil
 Tyler Neil
 Greg & Cindy Nelson
 Keith & Linda Nelson
 Lori Nelson
 Joanne Neufeld
 Margaret Neufeld
 David & Tori Newall
 Chantalle Newell
 Penny Newman

Brian Newton
 Sheeba Ninan
 Ron & Lynne Nordlund
 Sheila Norrie
 Ron & Claire Noseworthy
 Deborah Novak
 Jason Novak
 Delos & Ella Nyberg
 Kathleen O'Flaherty
 Michael & Cheryl O'Flaherty
 The Estate of Benny Oakley
 Shaune Oakley
 Maureen O'Hara-Leman
 Beverley Oldford
 Irene Olson
 Robin Olson
 Kate O'Neill
 Hellen & Allan Ortlieb
 Jerry & Joan Ortlieb
 Mary Ortlieb
 Gordon & Wendy Osioyway
 Joyce Osioyway
 Shawndel O'Sullivan
 Dennis & Alice O'Sullivan
 David Ouimet
 Heather Page
 Don & Helen Parfitt
 Cynthia Parker
 Susan Parkes
 Devienne Parkhill
 Bill & Theresa Parrish
 Graham & Hilary Partner
 Andrew & Lisa Paterson
 Donald & Lynne Paterson
 Shane & Kate Paterson
 David & Wendy Paton
 Lois Patterson
 Kenneth Paul
 Sandy Paul
 Jeff & Janet Paulson
 Ben & Gabrielle Pawlowski
 David & Elaine Pearce
 Eileen Pearson
 Mitchell Pearson
 Dr. Buzz Pederson & Dr. Rhonda Diamond
 Dave & Lisa Peloquin
 Ray & Bernice Peloquin
 John & Marlene Pendlebury
 Barb Penner
 Mark & Lisa Penner
 Gerard Penney
 James Perchaluk
 Chantel Pereira
 Diane Pereux
 Jamie Peters
 Char & Glen Peterson
 Sam Peterson
 Catherine Petracek
 Nancy & Philip Pickard
 Helen Pieczonka
 Giselle Pieczonka Pagani
 William McCrea Pigott

Robert W. Piper
 Muriel Pirie
 Candice Pitura
 Paul & Lorraine Pitura
 Ross & Beverly Playfair
 Stan & Lorraine Plett
 James Podjan
 Ron & Mary Ann Poirier
 Brenda Poliuies
 Bruce & Linda Ponton
 Rick & Donna Portman
 Ken & Lesley Powell
 Juanita and Doug Prebble
 Bernice Prenovault
 Donna Price
 Gerry & Barb Price
 Rhonda Pritchett
 Devan Prive
 Natalie Procyshyn
 Bob & Marnie Puchniak
 Debbie Quinn
 Betty Quinn
 Beverly Raby
 Ray Racette & Kathleen Moore
 Linda Radcliffe
 Ashley Radtke
 Deborah Ramsay
 Kathleen Ramsay
 Joseph & Alison Ratcliffe
 Peter Ratuski
 Roy & Sheryl Rawn
 Lorne & Patricia Redden
 David & Laura-Lynn Reeves
 David & Kathleen Reid
 Joan Reid
 Malcolm & Doreen Reid
 Marcia Reid
 Tracy Reid
 Dr. Jillie Retson
 Melanie Reynard
 Mervin Reynard †
 Nancy Reynolds
 Jess Rheault & Clint
 Muhammad Riaz
 Robert & Penny Richards
 Beverley Richardson
 Fred & Jan Richardson
 Hartley & Heather Richardson
 Jim & Leney Richardson
 Joan Richardson
 Michelle Richardson
 Thor & Natalie Richardson
 Tara & Gord Rickaby
 Jessica Ricklefs
 Melissa Ridgen
 Thomas Larry Rigney
 Sandy & Debbie Riley
 Nancy Riley & Blake Murray
 Sharon Rimstad
 Bryan & Heather Roberts
 Erin Roberts
 Jim Robertson



Randy Robertson
 Shirley Robertson
 Erika Robson
 Linda Rodegard
 Harrison Rogers
 Nadia Romaniuk
 Zelda Romsted
 Lynn Ronnebeck
 Margaret Ronning
 Gail Ross
 Guy & Marie Ross
 Vic & Judy Ross
 Kristie Roussin
 Elizabeth Rowan
 Catherine Rowlandson
 Joseph Roy
 Gordon Ruczak
 Janet Rutherford
 Colin & Jenny-Lou Ryan
 Jodie Saarinen
 Barry Sadler
 Emmanuel Salvador
 Isobel San Martin
 Jonathon Sas
 Garry & Susann Saunders
 Ellen Scarrow
 Dr. Robert Scatliff
 Peter & Andrea Scheibler
 Richard & Tiffany Scheibler
 Joan Schelske
 Jasmine Scheurmann
 Kailey Schick
 Chantelle Schneider
 Doug & Kathy Schneider
 Paul & Lori Schottroff
 Hartley Schwark
 Steve & Marjorie Seitler
 Rod & Jeannie Senft
 Sonya Seymour
 Wayne & Maria Shapland
 Anthony & Susan Sharp
 Gail Shaw
 Gordon & Katherine
 Shawcross
 Karen Sherrington
 Rod & Patricia Shewchuk
 Susan Shiska
 Brenda Shodin
 Angie Shura
 Lesa Sieradzki
 Carlos & Maria Silva
 Mark & Zoe Simkin
 Stephen Simons
 Marilyn Simonsen
 Dave Sinclair
 R. Bruce Sisson
 Dawn Skeavington
 Christine Skene
 Jerry Sleeman
 Riley Sleeman
 Arnold Slotin
 Ellen Smirl
 Karla Smith

Lori Smith
 Shelley Smith
 Gordon & Gail Smithson
 Dr. Laurel Snyder
 Allen & Virginia Snyder
 Karli Sobiski
 Meni Soc
 Vickie Soderman
 Taylor B. Somers
 Jim Spencer
 Phyllis Spencer
 Rene & Nancy Spencer
 Warren & Maureen Spencer
 Liane Spendlow
 Charlie Spiring
 David & Leslie Sprange
 Henry & Susan Sprong
 Andre & Eveline St. Hilaire
 Robert Stafford
 Mary Stahls
 Robert Stanson
 Debra Kasprick & Stash Zroback
 Laura Stasiuk
 Jason Stefanson
 Victoria Stefanson
 Nicole Stefenelli & Rod Nicolls
 Gwen & Gary Steiman
 Max Steinkopf
 Kaila Stepanik
 Shaun & Teresa Stevenson
 Connor Stewart
 Jodee Stewart
 Molly Stouffer
 June Strachan
 William & Susan Straight
 Dorothy Strain
 Kyra Strath
 Tanya & Kevan Sumner
 Dave & Kelly Sundmark
 Arni Thorsteinson & Susan Glass
 Angus Sutherland
 Julie Szajewski
 Holly Szumowski
 Kelly Tait
 Robert & Trudy Tait
 William & Donna Tait
 Norma Tanner †
 Crystal Taylor
 Gordon Taylor
 James & Janice Tennant
 Stephanie Tetreault
 Denise Theriault
 Nicole Theriault
 Rainette Therrien
 Brian & Jennifer Thiessen
 Brianna Thompson
 Jan Thompson
 Graeme & Sara Jane Thomson
 Joelle Thomson
 Tom Thomson
 Yvonne Thurston

Paul & Shirley Tilley
 Bryan Toews & Andree Gilbert
 Keanan Toews
 Sharon Toms
 Joanne Toth
 Shelby Tourond
 Karla Joy Treadway
 Mira Trebilcock & Meaghan Underwood
 Herb & Val Trent
 Lise Trent
 Toni Trepanier-Maenpaa
 Daniela & John Tsentouros
 Denis Turcotte
 Brian & Susan Turner
 Chantal Tycholiz
 Barbara Uhrynuk
 Jean Ukrainec
 Kelsie Van Belleghem
 Dave & Maxine Van Dam
 Liam Van De Watering
 Lucas Van Norman
 Dan Van Wallegghem
 Dr. John & Beth Vaudry
 Stephanie Verplaetse
 Ella Vincient
 Judy Vivian
 Lori Vogrig
 Nick & Christina Voth
 Michelle Wagenaar
 Bud & Faith Wagner
 Philip Walsh
 Neil & Barbara Walsten
 Robert Wares
 Joan Warner
 Merle Warner
 Brianne Warnick
 Meriele Warren
 Gus Watanabe
 Bruce Watterson
 Virginia Weese
 David & Susan Wellard
 Jaclyn Wells
 Rodger & Patricia Wendelborg
 Jean Wetendorf
 Sydney Wetendorf
 Clayton Whalen
 Elaine & Paul Whelan
 Olivia Whiddon
 Dave & Lindsay Whitaker
 Dawna White
 Jane Whiting
 Dave & Linda Wideman
 Eleanor Wiebe
 Gord Wiebe & Katherine Swick
 Martha Wilcox
 Pamela Wilcox
 Richard Wiley
 Dan & Loretta Williams
 Jean Williams

Gordon & Vera Willson
 Eileen Wilton
 Joland Winlove-Smith
 Blair Winstanley
 Elizabeth Wires
 Gary & Joan Wise
 Lina & Alfred Woelke
 Brad Wolfe
 Bob & Cheryl Woods
 Brandon Woods
 Dr. Murray Workman
 Terry Wright
 Richard Yaffe
 Betty Yarechewski
 Shawn Yarechewski
 Hannah Yaremko
 Dalton Yeomans
 Steven Zabloski
 Mike & Shirley Zdep
 Arcade & Bailey Zilinski
 Bill & Gwen Zroback
 Laurie Zroback
 Gayle Zrum
 Marjorie Zurevinski

COMMUNITY PARTNERS & FOUNDATIONS

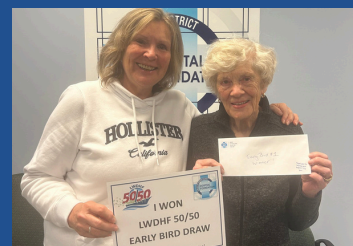
A.K. & Company (Kenora) Ltd.
Abundance Home
Appleby College Mathematics and
Computer Science department
Atlas Strength & Fitness
B.A. Robinson Co. Ltd - Winnipeg
Baked by the Lake
Bayview Toyota
BDO Canada LLP
Beaver Brae Secondary School
Bell's Septic
C.U.P.E. Local 191
Canadian Mental Health Association
Canadian Online Giving Foundation
Canadian Royal Purple Society
CARSTAR Kenora
Chef Rob Inc.
CIBC Kenora
Copperfin Credit Union - Kenora
Cornerstone Alliance Church Inc
Crawfords Camp
CrossFit Core KTown
Crown Cap
CUPE Local 1072
CUPE Local 191
D&R Plumbing & Heating
Diagnostic Imaging Team
The Dingwall Group
Dingwall Ford Sales - Dryden
Docside Clinic
Eecol Electric
Elias Range Stays
Elite Intellicare Staffing LTD
Envision Marketing, Kevin Booker
Eric and Carol Johnson Fund
FDC Foundation
Firefly
First Canadian Group of Companies
Flowers By The Lake
FSET, Dave & Nicole Brown
G Clef Choir and The Music Men
Gardner House Tenants Association
Gary & Carolyn Bachman Family Fund
Godbout Auto Services Inc.
Great Explorations
Harbourfront Oil and Vinegar
Hing's Chinese Foods
Hook, Seller, & Lundin LLP
Jarnel Contracting Ltd.
John Andrews Foundation
Kenora Catholic District School Board
Kenora Chevrolet Buick GMC
Kenora Chiefs Advisory Inc.
Kenora Home Hardware Building Centre

Kenora Honda
Kenora Medical Associates
Kenora Optometry Clinic
Kenora-Keewatin Medical
Keystone Lock & Safe
Kingfisher Boats Inc.
Kipper Mechanical LTD
Krown Kenora
Lake Country Financial Group
Lake of the Woods Electric
Lake of the Woods K40 Club
Lake of the Woods Shrine Club
Lakeside Builders
Lakeview Fire and Safety
LOTW Brewing Company Inc.
LWDH - Sunshine Club
Manitou Forest Products Ltd
Marv Forsythe Memorial Golf Tournament
Millwaters Holdings Ltd.
Ministry of Solicitor General/Kenora Jail
MNP LLP
Morgan Fuels
Nautical Coffee
North West Company
Northern Hearing
Novak MacDonald Fund
Oakwood Roofing & Sheet Metal Co. Ltd.
Panorama Ridge Condominiums Corp #3
Parkland Fuel Corporation
Pioneer Construction Kenora Division
Premier Marine
Princecraft
Pro Auto Glass
RBC Foundation
Re/Max Northwest Realty LTD
Red River Cooperative Ltd.
Robinson Family Foundation Fund
Royal Canadian Legion Branch #12
Royal Canadian Properties Limited
RTO ERO District 26 Kenora
Salesforce
Scrivener Family Foundation
Settlers Foundation
Shaun D. Stevenson Construction LTD
Shelter Canadian Properties Ltd
hewchuk Ormiston LLP
Sierra Construction
Smoke & Fire
So Tasty!
Solid City Rentals Ltd.
tandard Insurance Brokers Ltd.
Stitch
Strategic Charitable Giving Foundation
Sugar & Salt Bakery
Sunset Spray East LTD
Supper Central
Sure Can Volunteers
Synergy North Corporation

Talbot Family Foundation
The Alan & Doreen Thompson
Charitable Foundation
The Beer Store & Staff
The Paterson Family Foundation
The Window & Door Store
Toronto Global
Tracy's No Frills
United Fighter Kenora
United Way of Winnipeg
Upriver Media Inc.
Valleyview School Council
Wawanesa Insurance Company
Westcap Mgt.
Weyerhaeuser Company Limited
WOLFE Inc
Woodlake Marine Ltd.
WSL Sport & Leisure and Tall Pines
Marina



Whenever there is a need, the residents of Kenora and Lake of the Woods respond generously and thoughtfully.



WAYS TO GIVE

We offer ways of giving that work best for you. No matter which you choose, your generous support lays the foundation for everything we do.



Securities Giving

Make a donation of securities, bonds, or mutual funds and take advantage of tax benefits.



Grateful Patient Giving

Show gratitude to our hospital care team and heroes. A meaningful way to say thank you.



Memorial Giving

In memory gifts are a thoughtful way to let those who are grieving know you care.



Legacy Giving

A donation through your will, estate or other strategies is a powerful way to make a lasting difference.



LWDH Foundation 50/50

An online community 50/50 lottery where the proceeds help fund hospital needs.



Monthly Giving

Committing to regular donations shows your support for our ongoing initiatives to enhance the quality of healthcare – today and into the future.

Contact us today to learn more!

Noreen Bourgeois
Donor Relations
Coordinator
nbourgeois@lwdh.on.ca

Hannah Love
Operations Assistant
hlove@lwdh.on.ca

Mira Trebilcock
Executive Director
mtrebilcock@lwdh.on.ca

Visit
www.lwdhf.com



THE STANDARD

Insurance. Protection. Advice.



THANK YOU

MORE **ABOUT US**

Our goal is to inspire community giving at all levels to improve healthcare outcomes for the people of Kenora District and beyond.



Phone

807-468-9861 x2469



Email

lwdhf@lwdh.on.ca



Website

www.lwdhf.com



Office Address

21 Sylvan St. West, Kenora, ON P9N 3W7